



**CITY OF CAPE TOWN
ISIXEKO SASEKAPA
STAD KAAPSTAD**

DEVELOPMENT MANAGEMENT

JODI FULLARD
Senior Professional Officer

T: 021 400 6457
E: comments_objections.tablebay@capetown.gov.za

BLUM010

25 January 2020

PROPOSED PERMANENT DEPARTURE: ERF 27629, OBSERVATORY 22 COLLINGWOOD ROAD

The City of Cape Town has received the following planning application for consideration:

Case ID
70523193

Applicant/owner's details
CNdV Africa

Erf number(s)
27629

Description and physical address
22 Collingwood Road, Observatory

Purpose of the application

Proposed 8 storey mixed-use development comprising of 274m² business, 189 student units, and 255 apartment units. The following applications are being applied for:

1. Permanent Departures:
 - To permit the floor area of the building to be 18954m² in lieu of 17484m².
 - To permit the height of the building to be 27.45m in lieu of 25.0m above Existing Ground Level.
 - Seymour Street: building to be set back 1.070m in lieu of 4.5m for a height of 2m above 10m
 - Collingwood Road: building to be set back 0m in lieu of 4.5m for a height of 2m above 10m.
 - Blake Street: building to be set back 1.655m in lieu of 4.5m for a height of 1m above 10m from the Blake Street boundary
 - Northern Common boundary to be set back 0m in lieu of 4.5m for a height of 3m above 10m.
 - To permit 326 onsite parking bays in lieu of 370 on-site parking bays.

Enquiries

The application may be inspected during office hours at the office of the District Manager (2nd Floor, Media City cnr Hertzog Boulevard & Heerengracht Cape Town on weekdays 08:00 to 14:30
Please arrange an appointment with the District Secretary Roslind Buttersson 021 400 6444.

MEDIA CITY BUILDING, 2ND FLOOR,
CNR ADDERLEY STREET AND HERTZOG BOULEVARD CAPE TOWN, 8001
www.capetown.gov.za

Making progress possible. Together.

Objections, comments or representations

Any objection, comment or representation about the proposal **must be submitted on the prescribed form** with reasons therefor and may be submitted to the following email address: comments_objections.tablebay@capetown.gov.za (or submitted in writing to the office of the abovementioned District Manager) to be received before or on the closing date mentioned below.

You can download the prescribed form at the following link:
<http://www.capetown.gov.za/LandUseObjections>

Closing date for objections, comments or representations

17 March 2021

No late comment or objection will be considered unless the City Manager has agreed thereto in writing.

Relevant legislation

This notice is given in terms of section and/or of the City of Cape Town Municipal Planning By-law (MPBL), 2015.

General

An objection, comment or representation which does not meet the requirements in this notice may be disregarded.

Objections, comments or representations form part of public documents and are forwarded to the applicant for a response.

Any person who cannot write, may come to the district office mentioned above during office hours where he or she will be assisted with transcribing any comment or objection and the reasons therefor. Please arrange an appointment with the District Secretary Roslind Buttersen 021 400 6444.

By lodging an objection, comment or representation, the person doing so acknowledges that information may be made available to the public and to the applicant. An objector may request that the City Manager keep their full name, address and contact details confidential on good cause shown. Such request must be submitted together with the objection, comment or representation.

Any petition must comply with the requirements of section 91 of the City of Cape Town Municipal Planning By-law, 2015.

Neem asseblief kennis dat ingevolge artikel 82(4) van die Stad Kaapstad: Verordening op Munisipale Beplanning, 2015, hierdie kennisgewing ook op skriftelike versoek in Afrikaans of Xhosa beskikbaar is. Stuur die versoek na comments_objections.tablebay@capetown.gov.za binne sewe dae van die datum van hierdie kennisgewing.

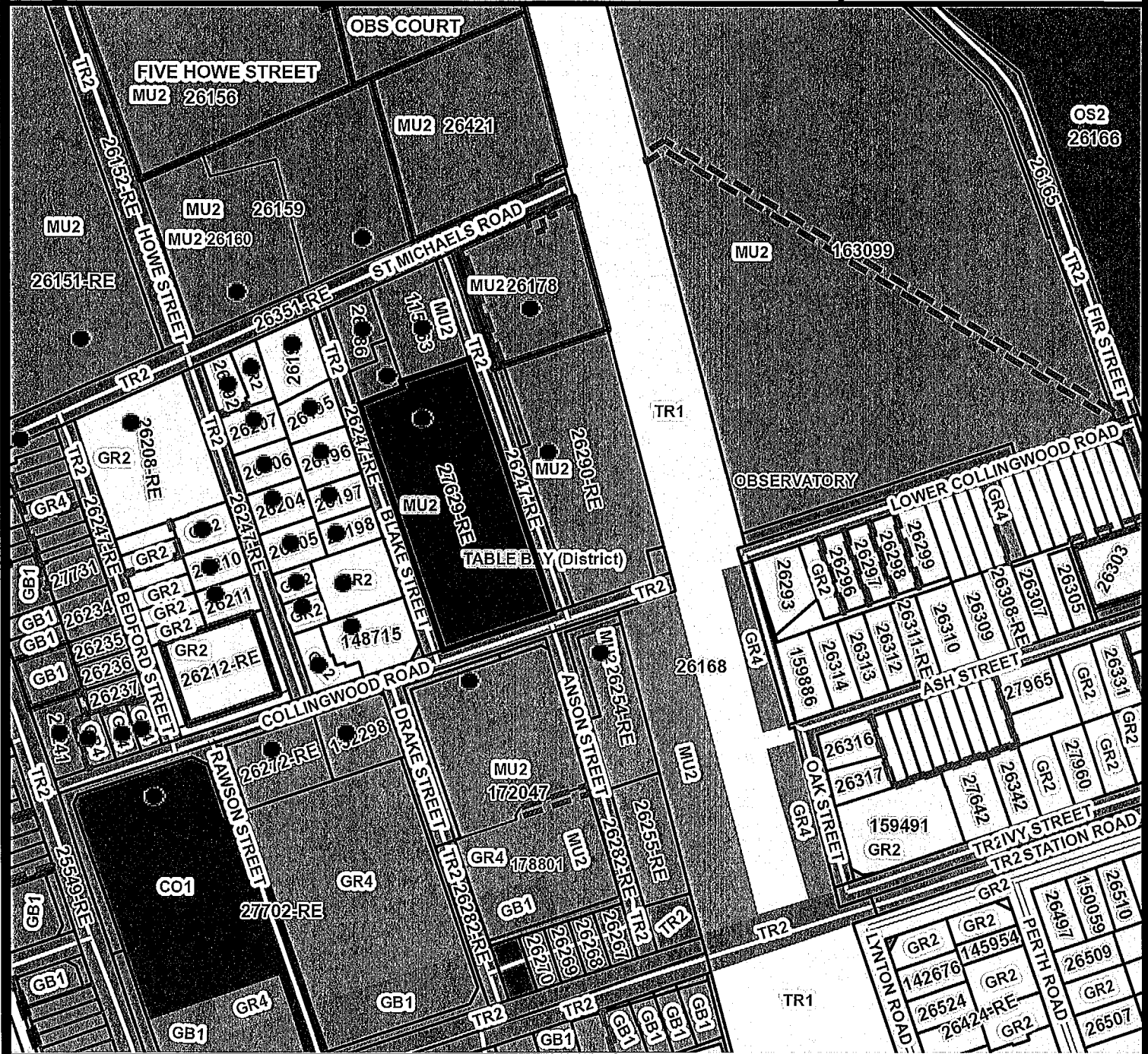
Nceda uqaphela ukuba ngokwecandelo 82(4) loMthetho kaMasipala woCwangciso lukaMasipala weSixeko saseKapa, wango-2015, esi saziso siyafumaneka ngesiXhosa nange-Afrikaansi ngesicelo esibhalwe phantsi. Eso sicelo masingeniswe ku-comments_objections.tablebay@capetown.gov.za ezisixhenxe ukususela ngomhla wokukhutshwa kwesi saziso..

Yours faithfully

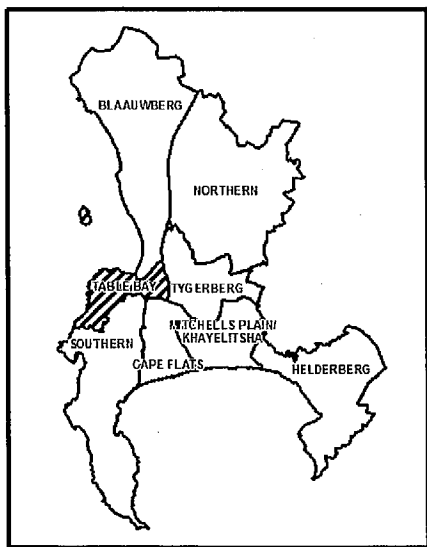


JODI FULLARD
for **DIRECTOR: DEVELOPMENT MANAGEMENT**

MEDIA CITY BUILDING, 2ND FLOOR,
CNR ADDERLEY STREET AND HERTZOG BOULEVARD CAPE TOWN, 8001
www.capetown.gov.za



Overview



Erf: 27629-RE

Allotment: CAPE TOWN

Ward: 57

District: TABLE BAY

Suburb: OBSERVATORY

Sub Council: Subcouncil 16



1:2 165

Notices Served



Support Received



Petition Signatory



Objections Received



Generated by:

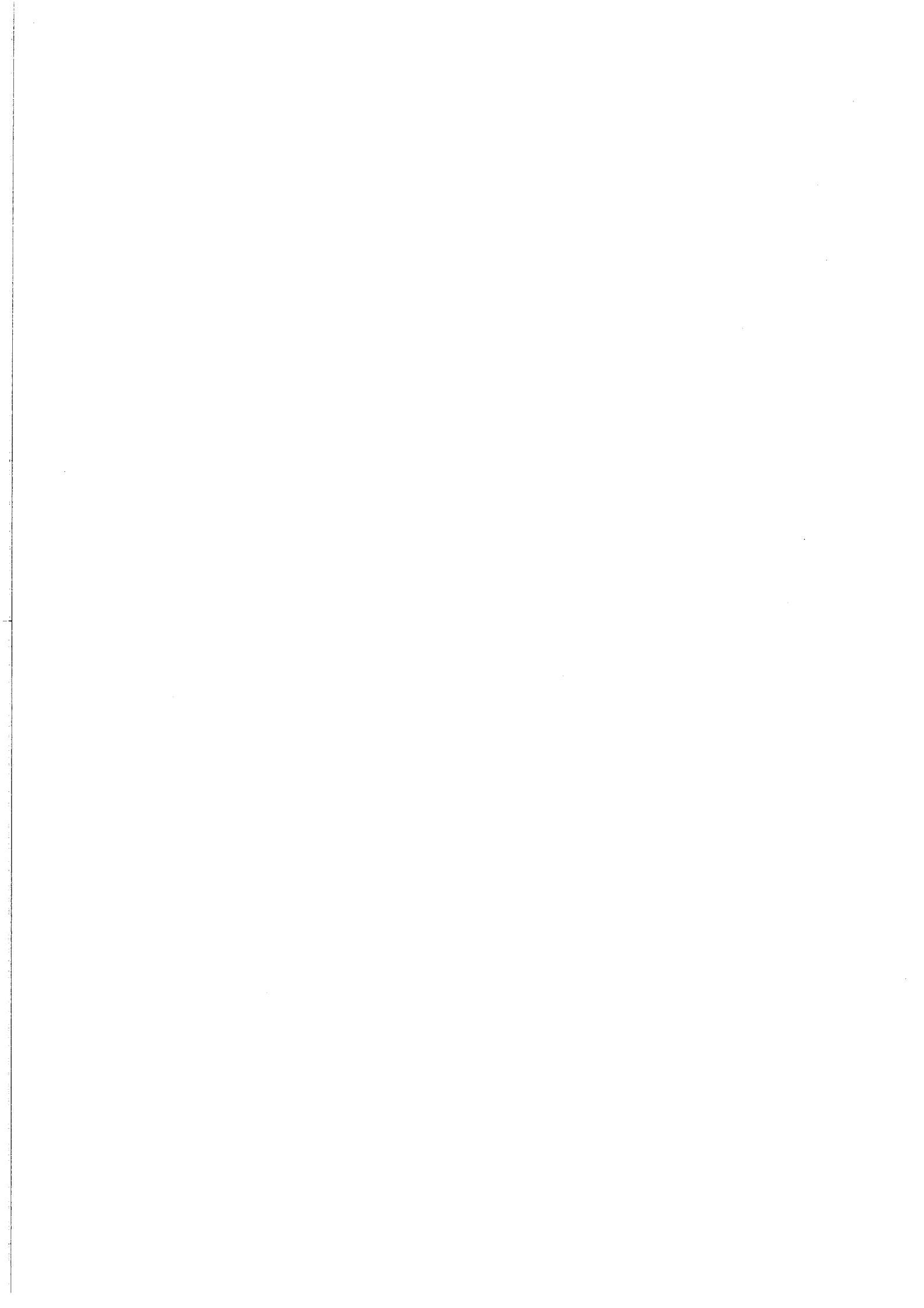
Date: Monday, 25 January 2021

File Reference:



CITY OF CAPE TOWN
ISIXEKO SASEKAPA
STAD KAAPSTAD

Making progress possible. Together.

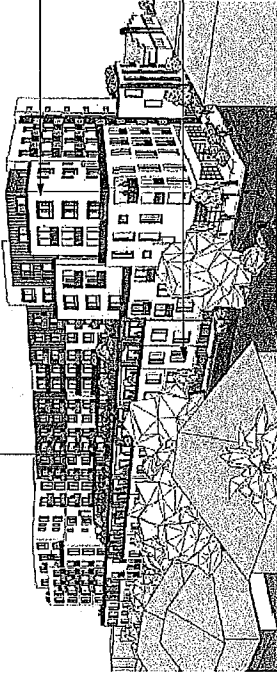


Annexure H

**Architect's Report, Plans, Sections and
Elevations**

22 COLLINGWOOD PROJECT SUMMARY

Roof Terrace



Apartments

- A courtyard style building that wraps around a landscaped roof terrace with shared amenities.
- 140 units.
- Diversity of apartment sizes with 2, 3, and 4 bedroom.
- Creating a neighborhood not a single building.

Duplexes

- Provides the backdrop for the site.
- Creating a neighborhood not a single building.

Site Information

EFF - see 4372-02
Permissible Use: Terrace

Floor space

Area Schedule (0-08 - Council Floor Space - Floor Space) SUMMARY

Name	Area
USEF4	10854 m ²
= Depreciate 8.5% over allowable floor space	
Total GCA (Gross construction area)	
50% Minimum (including Terrace) minimum	

Retail GLA

Name	Area
RETAIL - Small shop GLA	
BUSINESS - SMALL	115 m ²
SHOP A	
BUSINESS - SMALL	59 m ²
SHOP C	
BUSINESS - SMALL	100 m ²
SHOP D	
Grand Total	274 m ²

FLOOR SPACE SCHEDULE PER FLOOR

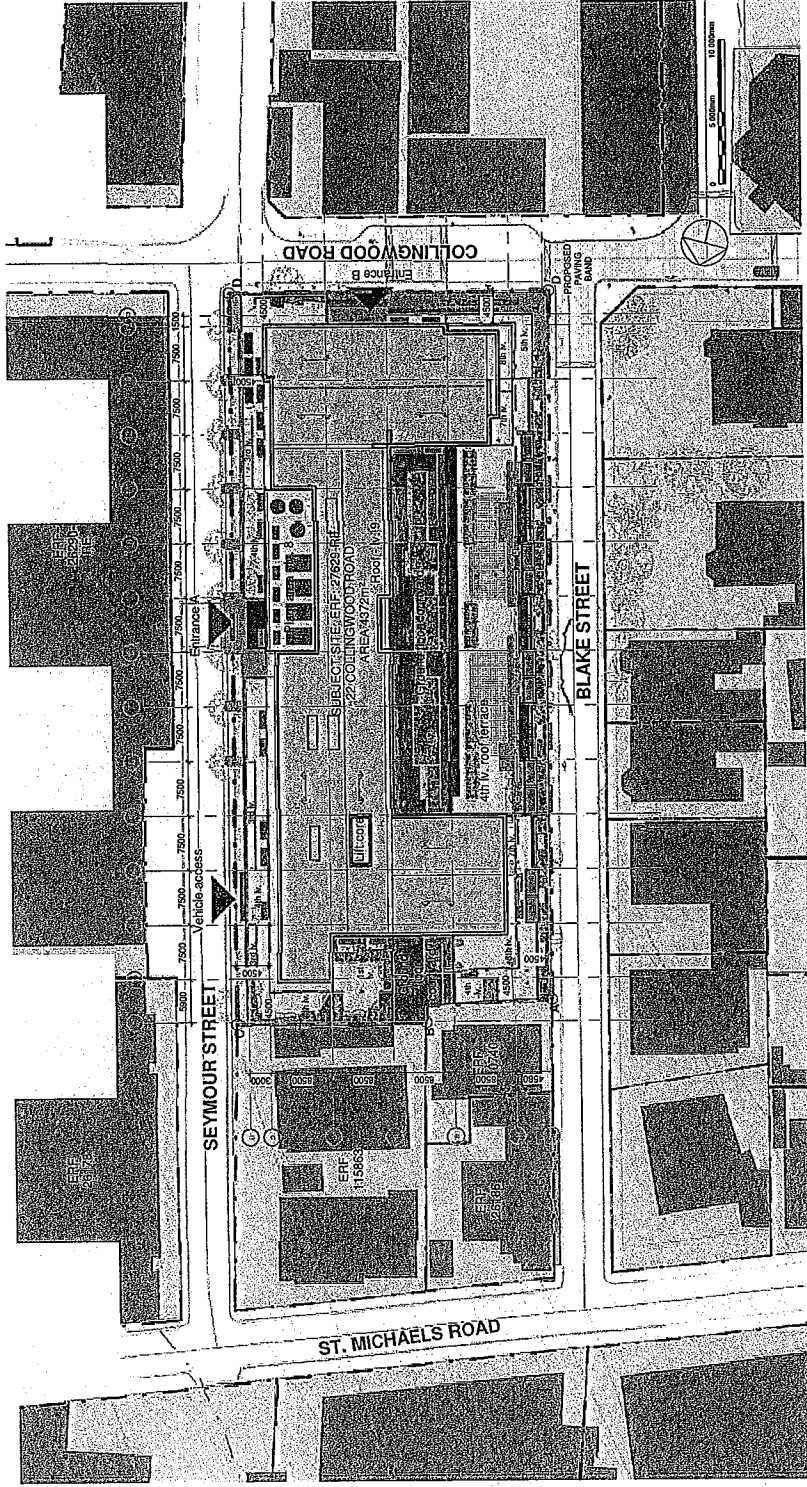
Name	Area
01_G2 - Basement 384	
FLOOR SPACE	128 m ²
01_G2 - Basement 182	
FLOOR SPACE	61 m ²
FLOOR SPACE	65 m ²
FLOOR SPACE	103 m ²
01_G2 - Level 1	
FLOOR SPACE	2425 m ²
01_G2 - Level 2	
FLOOR SPACE	2706 m ²
01_G2 - Level 3	
FLOOR SPACE	2681 m ²
01_G2 - Level 4	
FLOOR SPACE	1822 m ²
01_G2 - Level 5	
FLOOR SPACE	1783 m ²
01_G2 - Level 6	
FLOOR SPACE	1783 m ²
01_G2 - Level 7	
FLOOR SPACE	1751 m ²
01_G2 - Level 8	
FLOOR SPACE	1435 m ²
Grand Total	18547 m ²

UNIT SCHEDULE - STUDENT PER FLOOR

Level	Type Mark	Count	No of Beds
LEVEL 1	LEVEL 1	63	67
LEVEL 2	LEVEL 2	76	89
LEVEL 3	LEVEL 3	60	58
LEVEL 4	LEVEL 4	88	208
LEVEL 5	LEVEL 5	43	
LEVEL 6	LEVEL 6	41	
LEVEL 7	LEVEL 7	41	
LEVEL 8	LEVEL 8	50	
			444

UNIT SCHEDULE - NON STUDENT

Type Mark	Unit Type	Count	No of Beds	Balcony Area	Total Area
Type 1a	7.0 x 3.75	15	1	15	53 m ²
Type 1b	7.0 x 3.75	15	1	15	53 m ²
Type 2	8.5 x 3.75	27	1	27	92 m ²
Type 3a	7.5 x 4.25	49	1	49	162 m ²
Type 3b	7.5 x 4.25	18	1	18	59 m ²
Type 3c	7.5 x 4.25	18	1	18	59 m ²
Type 3d	5.0 x 4.25	1	1	1	38 m ²
Type 4a	7.0 x 7.5 (V)	24	1	24	84 m ²
Type 4b	8.9 x 6.25	4	1	4	13 m ²
Type 4c	7.5 x 7.0	5	1	5	16 m ²
Type 5	9.4 x 3.50	6	1	6	17 m ²
Type 6	10 x 3.75	4	1	4	13 m ²
Type 7a	8.1 x 6.8	1	1	1	27 m ²
Type 7b	8.1 x 6.8	1	1	1	27 m ²
Type 7c	8.1 x 6.8	1	1	1	27 m ²
Type 7d	8.1 x 6.8	1	1	1	27 m ²
Type 7e	8.5 x 7.0	1	1	1	27 m ²
Type 7f	8.5 x 7.0	1	1	1	27 m ²
Type 7g	8.5 x 7.0	1	1	1	27 m ²
Type 7h	8.5 x 7.0	1	1	1	27 m ²
Type 7i	8.5 x 7.0	1	1	1	27 m ²
Type 7j	8.5 x 7.0	1	1	1	27 m ²
Type 7k	8.5 x 7.0	1	1	1	27 m ²
Type 7l	8.5 x 7.0	1	1	1	27 m ²
Type 7m	8.5 x 7.0	1	1	1	27 m ²
Type 7n	8.5 x 7.0	1	1	1	27 m ²
Type 7o	8.5 x 7.0	1	1	1	27 m ²
Type 7p	8.5 x 7.0	1	1	1	27 m ²
Type 7q	8.5 x 7.0	1	1	1	27 m ²
Type 7r	8.5 x 7.0	1	1	1	27 m ²
Type 7s	8.5 x 7.0	1	1	1	27 m ²
Type 7t	8.5 x 7.0	1	1	1	27 m ²
Type 7u	8.5 x 7.0	1	1	1	27 m ²
Type 7v	8.5 x 7.0	1	1	1	27 m ²
Type 7w	8.5 x 7.0	1	1	1	27 m ²
Type 7x	8.5 x 7.0	1	1	1	27 m ²
Type 7y	8.5 x 7.0	1	1	1	27 m ²
Type 7z	8.5 x 7.0	1	1	1	27 m ²
Type 8 Duplex 1a	10 x 3.75	1	1	1	38 m ²
Type 8 Duplex 1b	10 x 3.75	1	1	1	38 m ²
Type 8 Duplex 1c	10 x 3.75	1	1	1	38 m ²
Type 8 Duplex 1d	10 x 3.75	1	1	1	38 m ²
Type 8 Duplex 1e	10 x 3.75	1	1	1	38 m ²
Type 8 Duplex 1f	10 x 3.75	1	1	1	38 m ²
Type 8 Duplex 1g	10 x 3.75	1	1	1	38 m ²
Type 8 Duplex 1h	10 x 3.75	1	1	1	38 m ²
Type 8 Duplex 1i	10 x 3.75	1	1	1	38 m ²
Type 8 Duplex 1j	10 x 3.75	1	1	1	38 m ²
Type 8 Duplex 1k	10 x 3.75	1	1	1	38 m ²
Type 8 Duplex 1l	10 x 3.75	1	1	1	38 m ²
Type 8 Duplex 1m	10 x 3.75	1	1	1	38 m ²
Type 8 Duplex 1n	10 x 3.75	1	1	1	38 m ²
Type 8 Duplex 1o	10 x 3.75	1	1	1	38 m ²
Type 8 Duplex 1p	10 x 3.75	1	1	1	38 m ²
Type 8 Duplex 1q	10 x 3.75	1	1	1	38 m ²
Type 8 Duplex 1r	10 x 3.75	1	1	1	38 m ²
Type 8 Duplex 1s	10 x 3.75	1	1	1	38 m ²
Type 8 Duplex 1t	10 x 3.75	1	1	1	38 m ²
Type 8 Duplex 1u	10 x 3.75	1	1	1	38 m ²
Type 8 Duplex 1v	10 x 3.75	1	1	1	38 m ²
Type 8 Duplex 1w	10 x 3.75	1	1	1	38 m ²
Type 8 Duplex 1x	10 x 3.75	1	1	1	38 m ²
Type 8 Duplex 1y	10 x 3.75	1	1	1	38 m ²
Type 8 Duplex 1z	10 x 3.75	1	1	1	38 m ²
Type 8 Duplex 2	10 x 3.75	1	1	1	38 m ²
Type 8 Duplex 3	10 x 3.75	1	1	1	38 m ²
Type 8 Duplex 4	10 x 3.75	1	1	1	38 m ²
Type 8 Duplex 5	10 x 3.75	1	1	1	38 m ²
Type 8 Duplex 6	10 x 3.75	1	1	1	38 m ²
Type 8 Duplex 7	10 x 3.75	1	1	1	38 m ²
Type 8 Duplex 8	10 x 3.75	1	1	1	38 m ²
Type 8 Duplex 9	10 x 3.75	1	1	1	38 m ²
Type 8 Duplex 10	10 x 3.75	1	1	1	38 m ²
Type 8 Duplex 11	10 x 3.75	1	1	1	38 m ²
Type 8 Duplex 12	10 x 3.75	1	1	1	38 m ²
Type 8 Duplex 13	10 x 3.75	1	1	1	38 m ²
Type 8 Duplex 14	10 x 3.75	1	1	1	38 m ²
Type 8 Duplex 15	10 x 3.75	1	1	1	38 m ²
Type 8 Duplex 16	10 x 3.75	1	1	1	38 m ²
Type 8 Duplex 17	10 x 3.75	1	1	1	38 m ²
Type 8 Duplex 18	10 x 3.75	1	1	1	38 m ²
Type 8 Duplex 19	10 x 3.75	1	1	1	38 m ²
Type 8 Duplex 20	10 x 3.75	1	1	1	38 m ²
Type 8 Duplex 21	10 x 3.75	1	1	1	38 m ²
Type 8 Duplex 22	10 x 3.75	1	1	1	38 m ²
Type 8 Duplex 23	10 x 3.75	1	1	1	38 m ²
Type 8 Duplex 24	10 x 3.75	1	1	1	38 m ²
Type 8 Duplex 25	10 x 3.75	1	1	1	38 m ²
Type 8 Duplex 26	10 x 3.75	1	1	1	38 m ²
Type 8 Duplex 27	10 x 3.75	1	1	1	38 m ²
Type 8 Duplex 28	10 x 3.75	1	1	1	38 m ²
Type 8 Duplex 29	10 x 3.75	1	1	1	38 m ²
Type 8 Duplex 30	10 x 3.75	1	1	1	38 m ²
Type 8 Duplex 31	10 x 3.75	1	1	1	38 m ²
Type 8 Duplex 32	10 x 3.75	1	1	1	38 m ²
Type 8 Duplex 33	10 x 3.75	1	1	1	38 m ²
Type 8 Duplex 34	10 x 3.75	1	1	1	38 m ²
Type 8 Duplex 35	10 x 3.75	1	1	1	38 m ²
Type 8 Duplex 36	10 x 3.75	1	1	1	38 m ²
Type 8 Duplex 37	10 x 3.75	1	1	1	38 m ²
Type 8 Duplex 38	10 x 3.75	1	1	1	38 m ²
Type 8 Duplex 39	10 x 3.75	1	1	1	38 m ²
Type 8 Duplex 40	10 x 3.75	1	1	1	38 m ²
Type 8 Duplex 41	10 x 3.75	1	1	1	38 m ²
Type 8 Duplex 42	10 x 3.75	1	1	1	38 m ²
Type 8 Duplex 43	10 x 3.75	1	1	1	38 m ²
Type 8 Duplex 44	10 x 3.75	1	1	1	38 m ²
Type 8 Duplex 45	10 x 3.75	1	1	1	38 m ²
Type 8 Duplex 46	10 x 3.75	1	1	1	38 m ²
Type 8 Duplex 47	10 x 3.75	1	1	1	38 m ²
Type 8 Duplex 48	10 x 3.75	1	1	1	38 m ²
Type 8 Duplex 49	10 x 3.75	1	1	1	38 m ²
Type 8 Duplex 50	10 x 3.75	1	1	1	38 m ²
Type 8 Duplex 51	10 x 3.75	1	1	1	38 m ²
Type 8 Duplex 52	10 x 3.75	1	1	1	38 m ²
Type 8 Duplex 53	10 x 3.75	1	1	1	38 m ²
Type 8 Duplex 54	10 x 3.75	1	1	1	38 m ²
Type 8 Duplex 55	10 x 3.75	1	1	1	38 m ²
Type 8 Duplex 56	10 x 3.75	1	1	1	38 m ²
Type 8 Duplex 57	10 x 3.75	1	1	1	38 m ²
Type 8 Duplex 58	10 x 3.75	1	1	1	38 m ²
Type 8 Duplex 59	10 x 3.75	1	1	1	38 m ²
Type 8 Duplex 60	10 x 3.75	1	1	1	38 m ²
Type 8 Duplex 61	10 x 3.75	1	1	1	38 m ²
Type 8 Duplex 62	10 x 3.75	1	1	1	38 m ²
Type 8 Duplex 63	10 x 3.75	1	1	1	38 m ²
Type 8 Duplex 64	10 x 3.75	1	1	1	38 m ²
Type 8 Duplex 65	10 x 3.75	1	1	1	38 m ²
Type 8 Duplex 66	10 x 3.75	1	1	1	38 m ²
Type 8 Duplex 67	10 x 3.75	1	1	1	38 m ²
Type 8 Duplex 68	10 x 3.75	1	1	1	38 m ²
Type 8 Duplex 69	10 x 3.75	1	1	1	38 m ²
Type 8 Duplex 70	10 x 3.75	1	1	1	38 m ²
Type 8 Duplex 71	10 x 3.75	1	1	1	38 m ²
Type 8 Duplex 72	10 x 3.75	1	1	1	38 m ²
Type 8 Duplex 73	10 x 3.75	1	1	1	38 m ²
Type 8 Duplex 74	10 x 3.75	1	1	1	38 m ²
Type 8 Duplex 75	10 x 3.75	1	1	1	38 m ²
Type 8 Duplex 76	10 x 3.75	1	1	1	38 m ²
Type 8 Duplex 77	10 x 3.75	1	1	1	38 m ²
Type 8 Duplex 78	10 x 3.75	1	1	1	38 m ²
Type 8 Duplex 79	10 x 3.75	1	1	1	38 m ²
Type 8 Duplex 80	10 x 3.75				



dhk architects (pty) ltd
 6th floor, de waaiert centre
 9 somerset road, capra town
 tel: +27 (0) 21 421 6803
 fax: +27 (0) 21 421 0270
 email: arch@dhk.co.za
 reg no: 1998/0208/0707



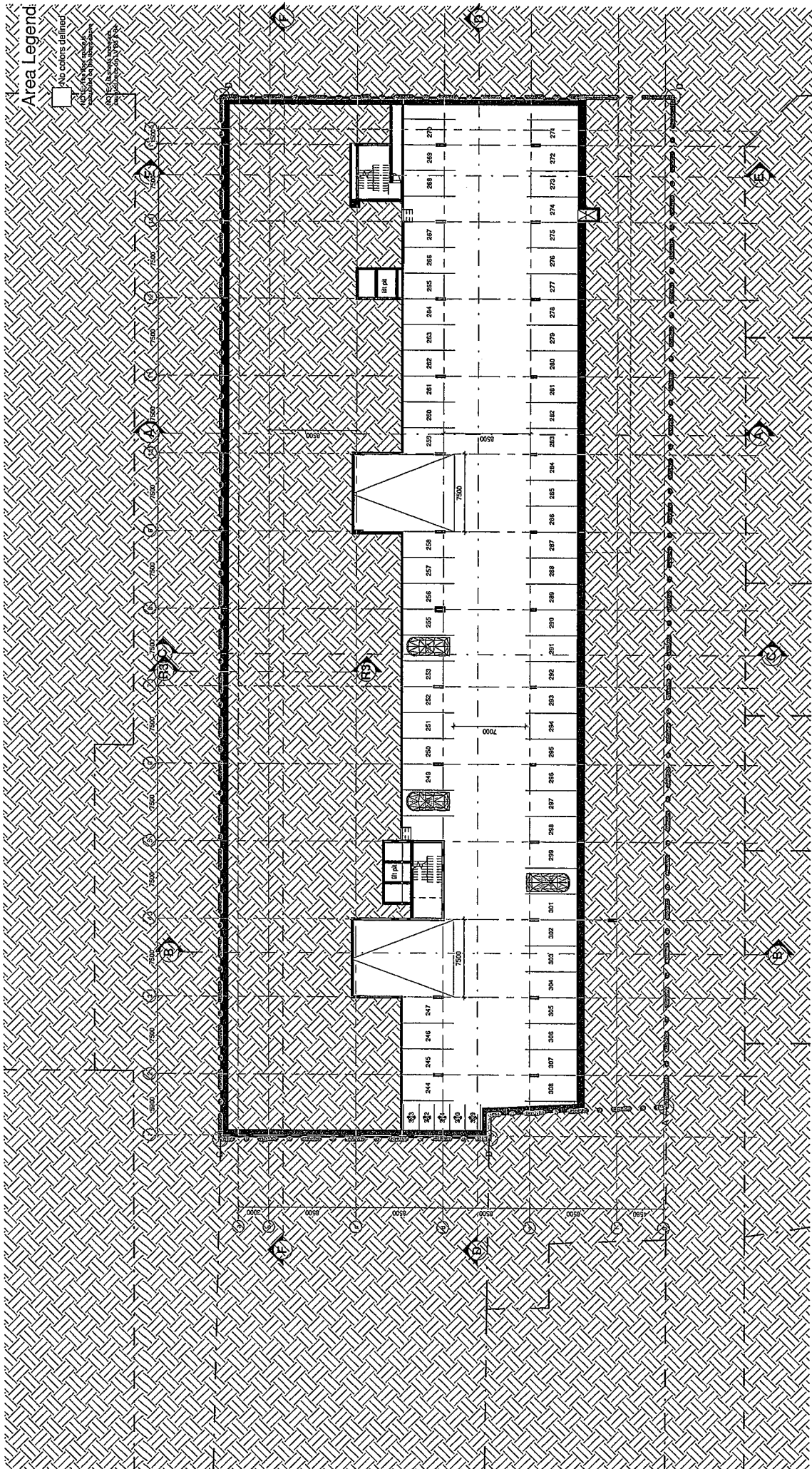
notes:
 • the design on this drawing is copyright and remains the property of dhk
 • no part of this drawing may be reproduced, stored in a retrieval system or used in any form or by any means electronic, mechanical, photocopying, recording, or by any information storage and retrieval system without the prior written permission of dhk architects (pty) ltd
 • the scaling of this drawing for construction purposes is not permitted
 • any discrepancies are to be resolved in favour of the contractor
 • any discrepancies are to be resolved in favour of the contractor
 • any discrepancies are to be resolved in favour of the contractor

project: 22 COLLINGWOOD OBSERVATORY

client: CASTLE GROUP

drawing: Site Plan / Roof Plan

project number: 200220
 drawing number: 01-01-014
 revision: F
 scale: 1:500 @ A2



Area Legend:

- NO CONCRETE CHAIRS
- CONCRETE CHAIRS
- CONCRETE CHAIRS



Project number: 20020
 Drawing number: 01-01-000 | N
 Drawing title: -03 Basement
 Scale: 1:250 @ A2

Client: CASTLE GROUP

Project: 22 COLLINGWOOD OBSERVATORY

Revision: 001

Notes:

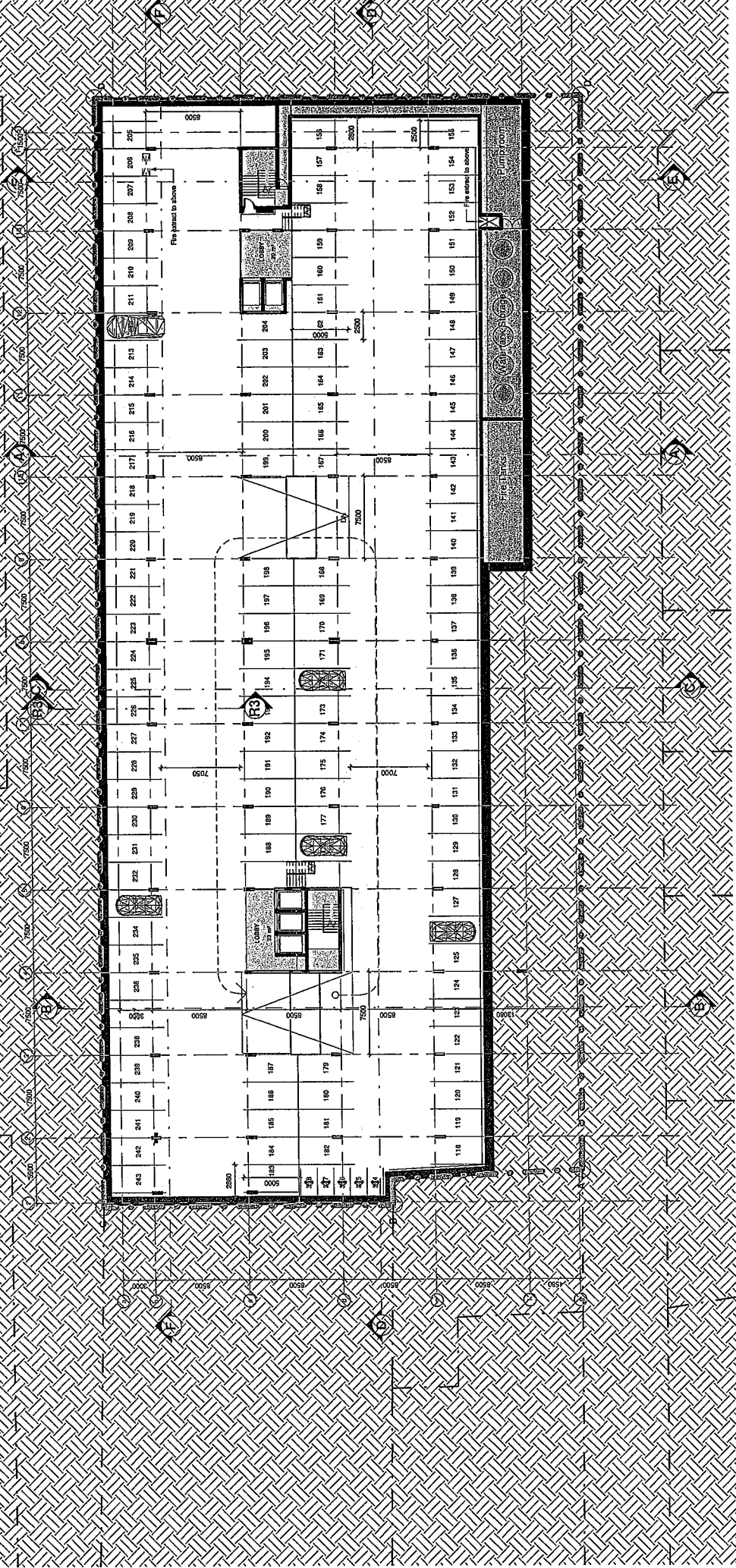
- The design on this drawing is copyright and remains the property of dhk.
- All rights to be carried out in accordance with the N.B.C. SANS 10400.
- The scaling of this drawing for construction purposes is not permitted.
- All dimensions and levels are to be confirmed on site prior to construction.
- Any discrepancies are to be reported to dhk immediately.
- dhk is not responsible for errors resulting from misinterpretation of this drawing.

dhk architects (Pty) Ltd
 6th floor, 4th westbank centre
 9 Somerset road, Cape Town
 Tel: +27 (0) 21 421 8303
 Fax: +27 (0) 21 421 8370
 Email: architects@dhk.co.za
 reg no: 1996/02093707



Area Legend

- Floor Slabs
- SERVICES
- Structural Wall



0 5000mm 10000mm

PROJECT NUMBER: 200220
 DRAWING NUMBER: 01-01-001
 DATE: 200220
 SCALE: 1:250 @ A2

CASTLE GROUP
 -02 Basement

PROJECT: 22 COLLINGWOOD OBSERVATORY

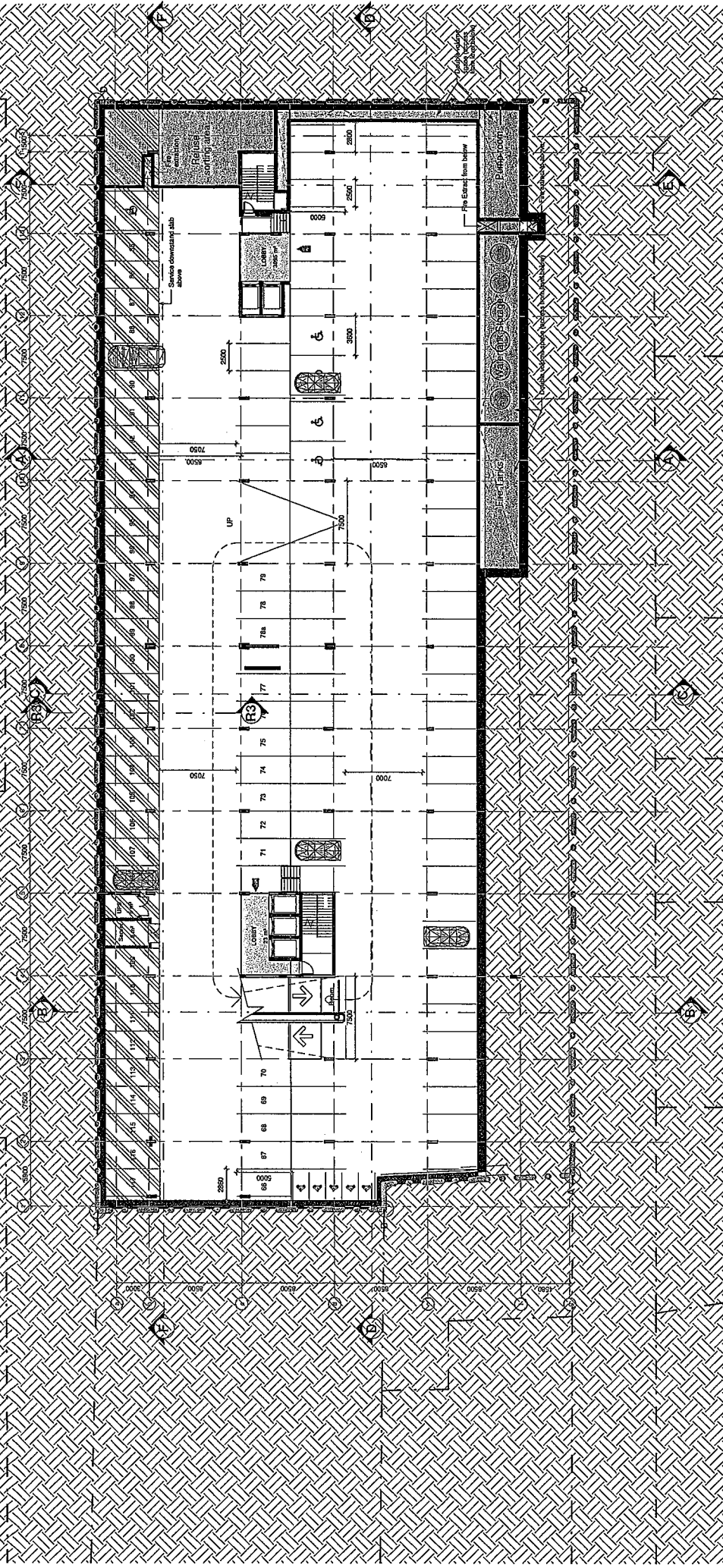
NOTES:
 - The design on this drawing is copyright of dhk architects (Pty) Ltd.
 - All applicable authority regulations and codes of practice must be followed.
 - All dimensions and levels are to be confirmed on site prior to construction.
 - dhk architects (Pty) Ltd. accepts no responsibility for errors resulting from misinterpretation of this drawing.

dhk architects (Pty) Ltd
 5th floor, 24 West Street
 3 Somerset Road, Cape Town
 Tel: +27 (0) 21 421 6803
 Fax: +27 (0) 21 421 9279
 Email: arch@dhk.co.za
 REG. NO: 1996/000607/737



Area Legend

- Floor Slab
- SERVICES
- Structural Wall
- Structural Column



01_02 - Basement 1&2

SCALE 1 : 250

dlhk architects (Pty) Ltd
 5th floor, de waenerman centre
 9 sunward road, cape town
 tel: +27 (0) 21 421 8800
 fax: +27 (0) 21 421 1670
 email: arch@dlhk.co.za
 reg no: 1998/0267077



PROJECT
**22 COLLINGWOOD
 OBSERVATORY**

ARCHITECT
CASTLE GROUP

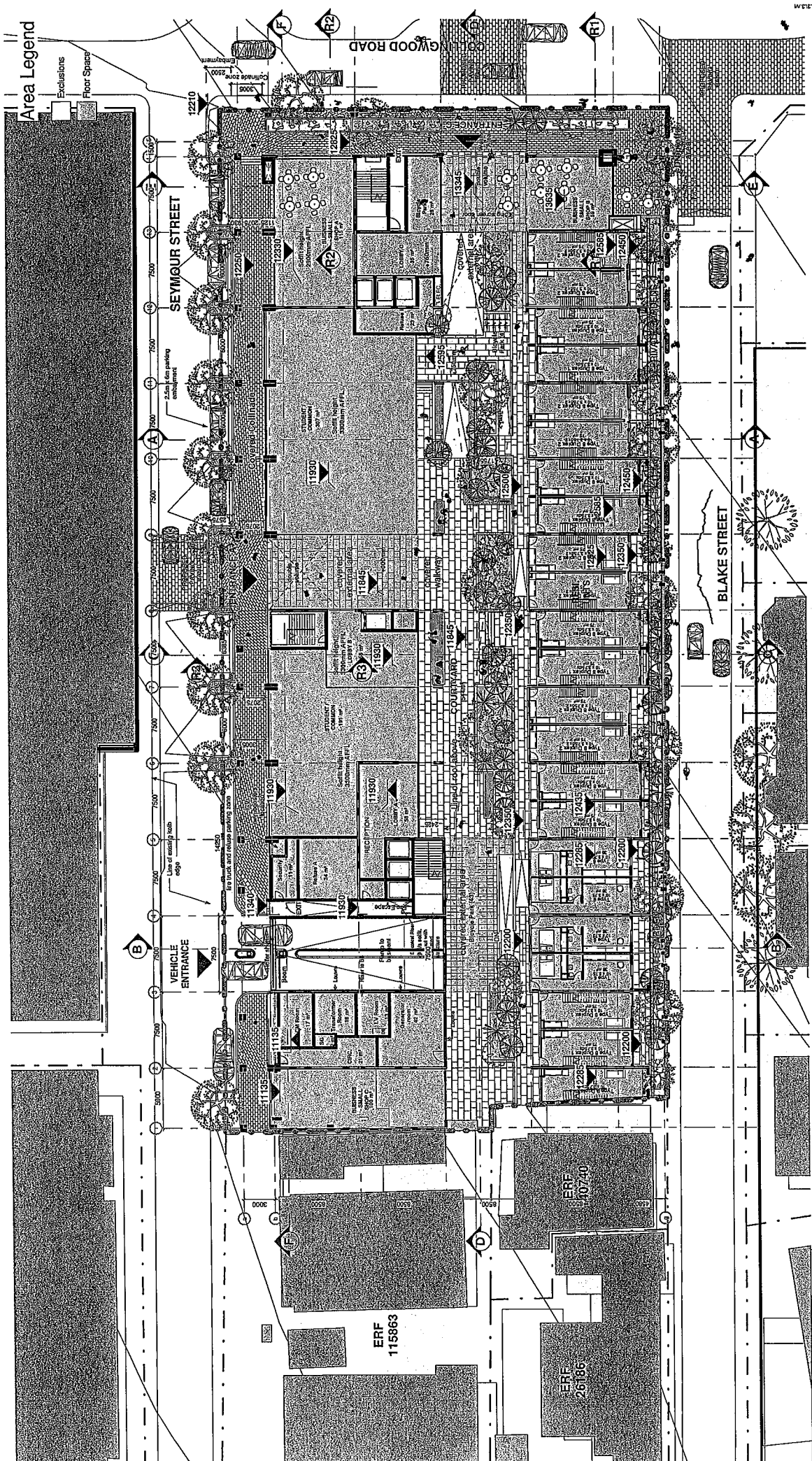
DATE
-01 Basement

CLIENT REFERENCE
20020
200220

CLIENT NUMBER
01-01-002
1 : 250 @ A2

PROJECT LOCATION
 20020_Collingwood_CPS2_SitePlan_Rev01.dwg

- NOTES:
- The design on this drawing is copyright and remains the property of dlhk.
 - All work is to be carried out in accordance with the N.B.S.A. STANDS (1000).
 - The scaling of this drawing for construction purposes is not permitted.
 - All dimensions and levels are to be confirmed on site prior to construction.
 - Any discrepancies are to be reported to dlhk immediately.
 - dlhk architects is not responsible for errors resulting from misinterpretation of this drawing.



UNIT SCHEDULE_Level 0 GF

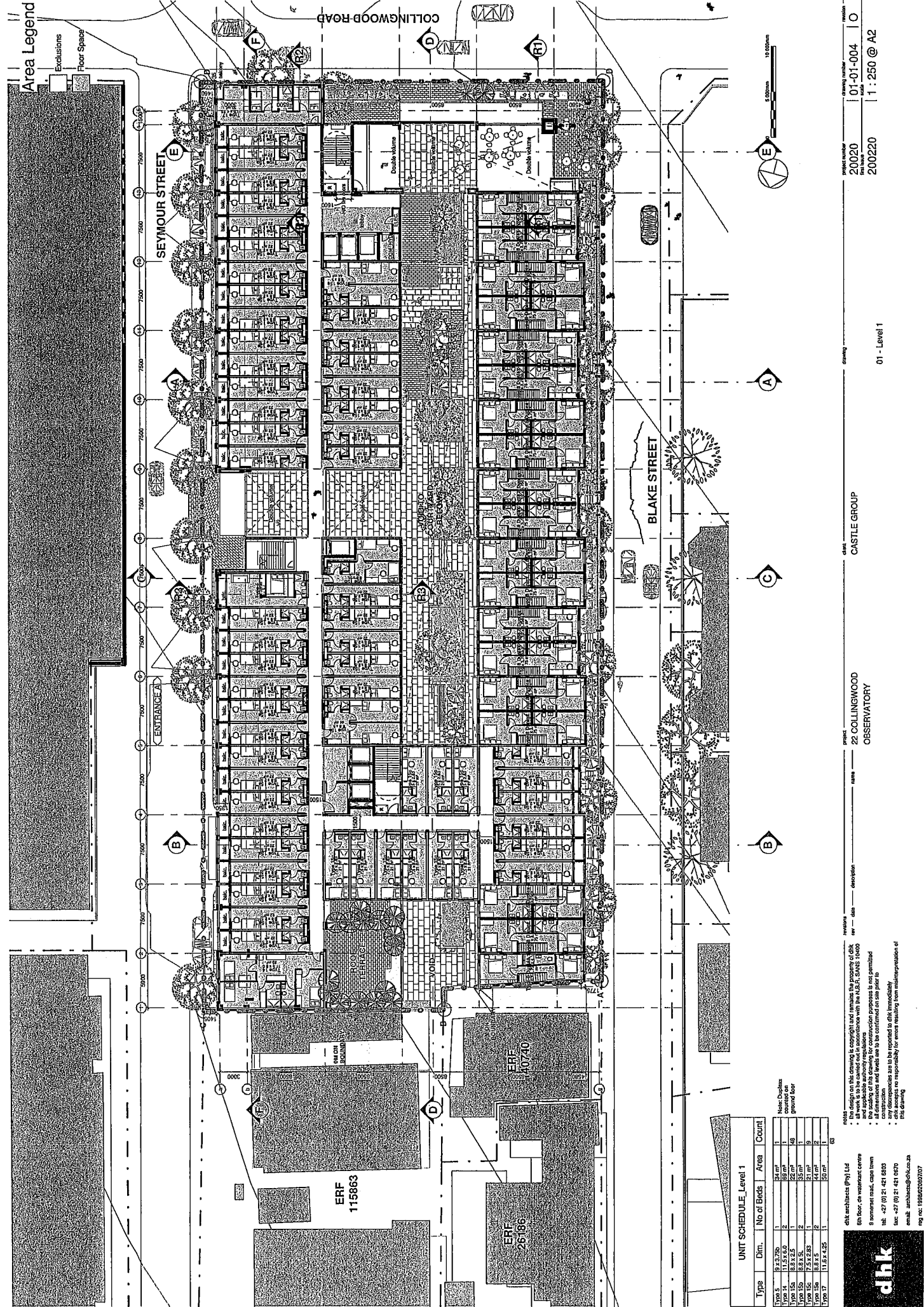
Type	Dim.	No of Beds	Area	Count
Type 6	10 x 3.75	4	38 m ²	4
Type 8 Duplex 1	10 x 3.75 x 2	20	75 m ²	10
Type 8 Duplex 2	10 x 3.75 x 2	16	75 m ²	8
				23

d|b|k
 d|b|k architects (Pty) Ltd
 8th floor, 40 Westmead Centre
 9 Somers Road, Crows Nest
 Tel: +67 (0) 21 421 6205
 Fax: +67 (0) 21 421 6276
 email: architects@dlb.com.au
 reg no: 19980200707

NOTES:
 • design on this drawing is copyright and remains the property of d|b|k
 • all work to be carried out in accordance with the U.S.A. STANDARDS 10400
 • the addition of this drawing for construction purposes is not permitted
 • all dimensions and levels are to be confirmed on site prior to
 • any discrepancies are to be reported to d|b|k immediately
 • d|b|k accepts no responsibility for errors resulting from misinterpretation of
 this drawing

PROJECT: 22 COLLINGWOOD OBSERVATORY
 ARCHITECT: CASTLE GROUP
 DATE: 200220
 REVISION: 01-01-003
 DRAWING NO: 19980200707

00 - Ground Floor
 SCALE: 1 : 250 @ A2
 PROJECT NUMBER: 200220
 DRAWING NUMBER: 01-01-003
 REVISION: R



Area Legend
 Exclusions
 Floor Space

UNIT SCHEDULE_Level 1

Type	Dim.	No of Beds	Area	Count
Type 5	9.3 x 7.25	1	64 m ²	1
Type 14	11.5 x 6.0	2	69 m ²	40
Type 15	8.2 x 5.5	2	45 m ²	10
Type 15a	8.2 x 5.5	2	45 m ²	1
Type 15c	7.5 x 2.85	1	21 m ²	9
Type 15b	8.8 x 5	2	44 m ²	2
Type 17	11.8 x 4.25	1	50 m ²	6

Note: Double counted on ground floor

dhk architects (Pty) Ltd
 8th floor, 44 Waterfront Centre
 8 Somerset Road, Cape Town
 Tel: +27 (0) 21 421 6800
 Fax: +27 (0) 21 421 0270
 email: architects@dhk.co.za
 reg no: 1936/0238/707

project: 22 COLLINGWOOD OBSERVATORY

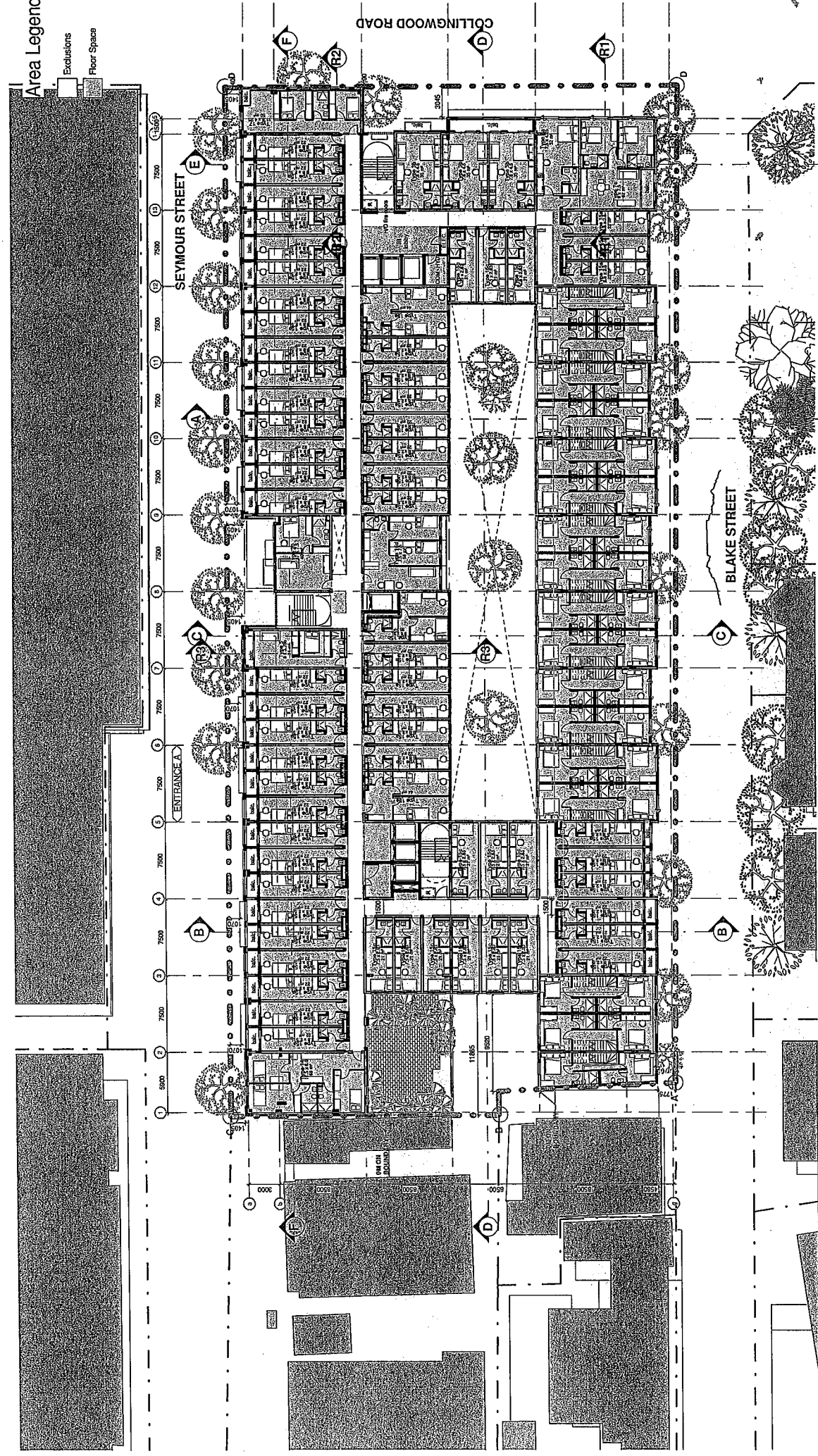
client: CASTLE GROUP

drawing: 01 - Level 1

revision: 200220 01-01-004
 drawing number: 200220 1 : 250 @ A2

Area Legend

- Exclusions
- Floor Space



UNIT SCHEDULE_Level 2

Type	Dim.	Area	Count
Type 15a	7.5 x 2.58	21 m ²	12
Type 15b	6.8 x 2.5	17 m ²	12
Type 15c	6.8 x 2.5	17 m ²	2
Type 17	11.6 x 4.25	50 m ²	1
Type 20	6.27 x 7.5	40 m ²	76

UNIT SCHEDULE_Level 2

Type	Dim.	Area	Count
Type 3a	7.5 x 4.25	32 m ²	1
Type 3b	6.8 x 3.75	26 m ²	1
Type 3c	6.8 x 3.75	26 m ²	1
Type 7a	9.7 x 7.5	68 m ²	1
Type 14	11.5 x 6.0	69 m ²	1
Type 15a	6.8 x 2.5	17 m ²	51
Type 15b	6.8 x 2.5	17 m ²	1

Note:
 • the design on this drawing is copyright and remains the property of dlh
 • all work to be carried out in accordance with the N.B.A. SANS 10400
 • the scaling of this drawing for construction purposes is not permitted
 • all dimensions and levels are to be confirmed on site prior to
 • any discrepancies are to be reported to dlh immediately
 • dlh is not responsible for errors resulting from misinterpretation of
 this drawing

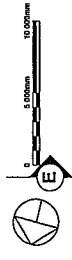
dlh architects (Pty) Ltd
 9th floor, 46 Westbank Centre
 9 Somerset Road, Cape Town
 Tel: +27 (0) 21 421 5800
 Fax: +27 (0) 21 421 5870
 email: architects@dlh.co.za
 reg no: 1994/020187/07



CLIENT: CASTLE GROUP
 PROJECT: 22 COLLINGWOOD OBSERVATORY

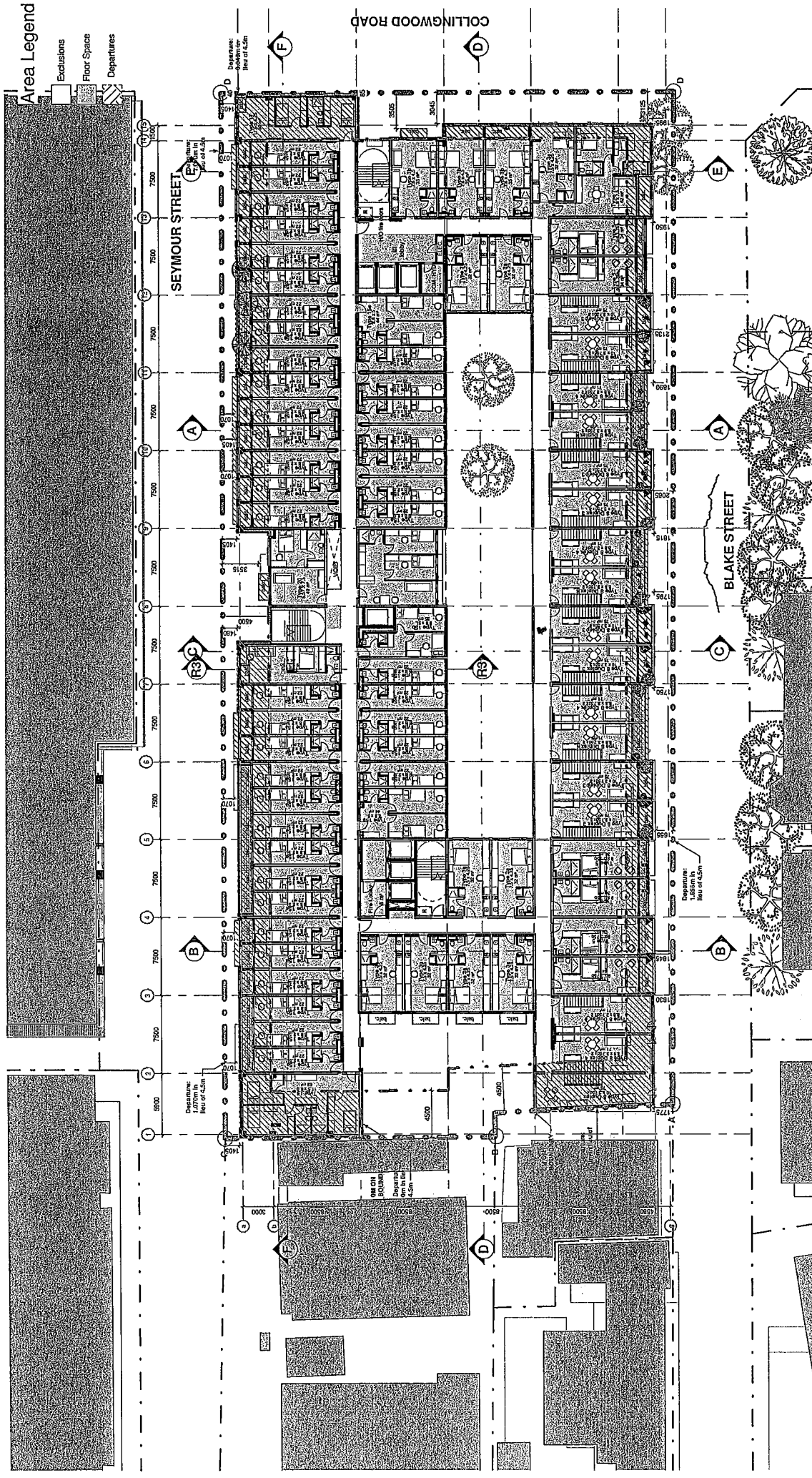
02 - Level 2

PROJECT NUMBER: 200220
 DRAWING NUMBER: 01-01-005
 DATE: 200220
 SCALE: 1 : 250 @ A2



Area Legend

- Exclusions
- Floor Space
- Departures



UNIT SCHEDULE_Level 3

Type	Size	Dim.	Count
Type 15a	8.8 x 2.5	22 m ²	14
Type 15b	8.2 x 2.1	15 m ²	1
Type 15c	8.2 x 2.1	15 m ²	1
Type 15d	8.2 x 2.1	15 m ²	1
Type 15e	8.2 x 2.1	15 m ²	2
Type 17	11.8 x 4.25	50 m ²	1
Type 20	5.27 x 7.5	40 m ²	86

UNIT SCHEDULE_Level 3

Type	Size	Dim.	Count
Type 3a	7.5 x 2.5	18 m ²	8
Type 3b	7.5 x 2.5	18 m ²	8
Type 3c	7.5 x 2.5	18 m ²	8
Type 3d	7.5 x 2.5	18 m ²	8
Type 3 Duplex 1	10 x 3.75	38 m ²	1
Type 3 Duplex 2	10 x 3.75	38 m ²	1
Type 3 Duplex 3	10 x 3.75	38 m ²	1
Type 3 Duplex 4	10 x 3.75	38 m ²	1
Type 14	11.8 x 6.0	71 m ²	1

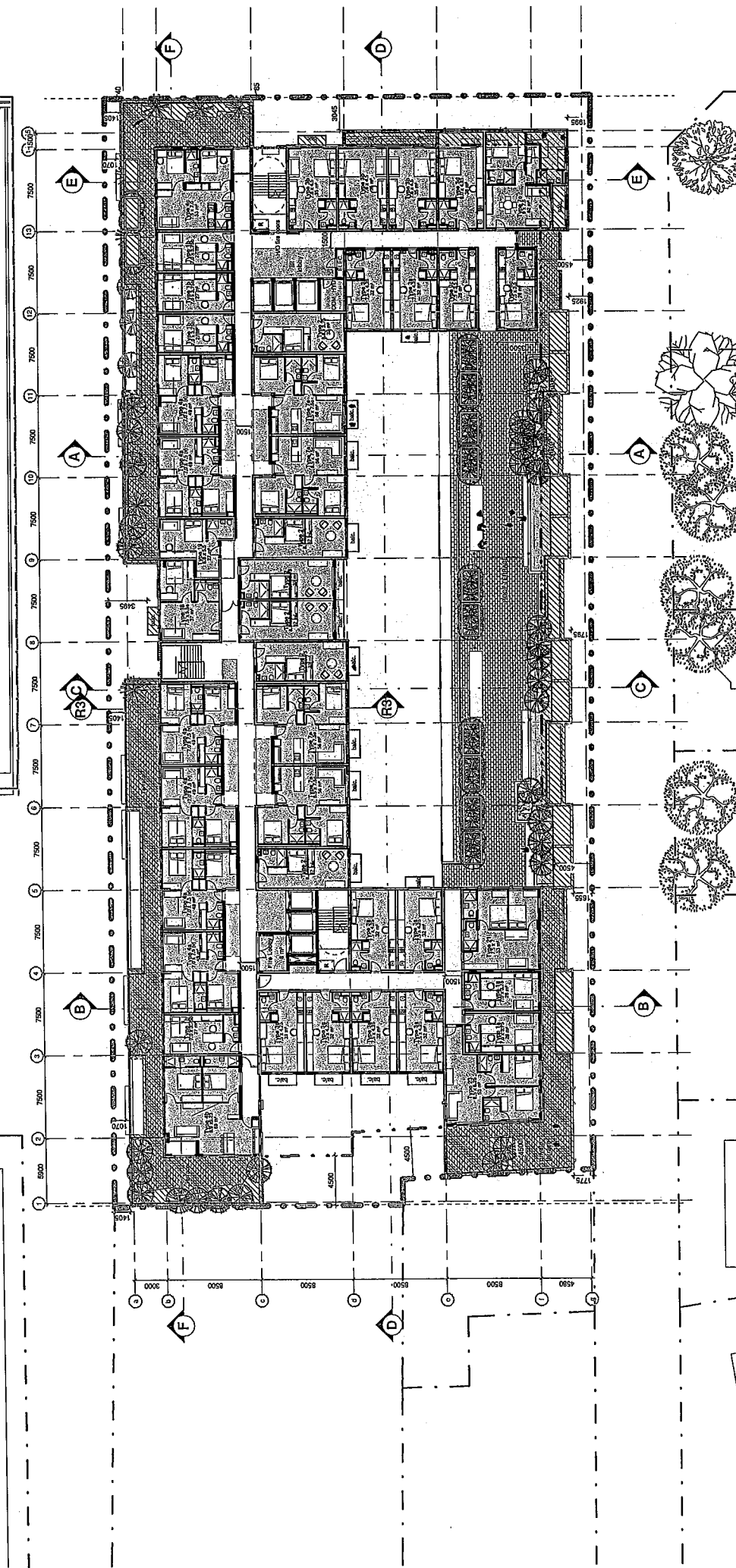
Notes on this drawing is complete and accurate to the property of d/hk
 • All work to be carried out in accordance with the N.S.W. SANS 10400
 and applicable authority regulations
 • All dimensions and levels are to be confirmed on site prior to
 construction
 • All dimensions and levels are to be confirmed on site prior to
 construction
 • d/hk accepts no responsibility for errors resulting from misinterpretation of
 this drawing

d/hk
 d/hk architect (pty) Ltd
 8th floor, 44 warehouse centre
 9 amenton rd, cape town
 tel: +27 (0) 21 421 8803
 fax: +27 (0) 21 421 0670
 email: arch@dhk.co.za
 reg no: 1896208707

client: CASTLE GROUP
 project: 22 COLLINGWOOD OBSERVATORY
 revision: _____
 date: _____
 description: _____
 scale: _____
 sheet: _____
 drawing: _____
 drawing number: 200220 | 01-01-007 | P
 revision number: 200220 | 1:250 @ A2

Area Legend

- Exclusions
- Floor Space
- Departures



UNIT SCHEDULE_Level 4

Type	Size	Dim.	Count
Type 1	7.5 x 7	53 m ²	1
Type 2	6.5 x 6.25	38 m ²	4

UNIT SCHEDULE_Level 4

Type	Size	Dim.	Count
Type 4a	7.0 x 7.5 (V)	49 m ²	6
Type 4b	6.9 x 6.25	43 m ²	1
Type 4c	7.5 x 7.0	53 m ²	1
Type 4d	7.5 x 7.5	56 m ²	1
Type 7a	6.5 x 7.5	49 m ²	4
Type 7b	7.5 x 5.5	41 m ²	1
Type 7c	7.5 x 5.5	41 m ²	1
Type 7d	6.3 x 5.5	35 m ²	1

UNIT SCHEDULE_Level 4

Type	Size	Dim.	Count
Type 1a	7.0 x 7.5	53 m ²	2
Type 1b	7.0 x 7.5	53 m ²	4
Type 2	6.5 x 6.25	38 m ²	6
Type 3a	7.5 x 4.25	32 m ²	3
Type 3b	7.5 x 4.25	32 m ²	3
Type 3c	7.5 x 4.25	32 m ²	2
Type 3d	9.0 x 4.25	38 m ²	1

- notes:
- all work to be carried out in accordance with the N.S.I. SANS 10400 and applicable authority regulations
 - all dimensions and levels are to be confirmed on site prior to construction
 - all work to be completed in accordance with the program of works
 - all work to be completed in accordance with the program of works
 - all work to be completed in accordance with the program of works

dhk architects (Pty) Ltd
 9th floor, de waalstreet centre
 9 geminaart road, cape town
 tel: +27 (0) 21 421 8803
 fax: +27 (0) 21 421 0670
 email: arch@dhk.co.za
 reg no: 1998/00207/07



client: CASTLE GROUP
 project: 22 COLLINGWOOD OBSERVATORY

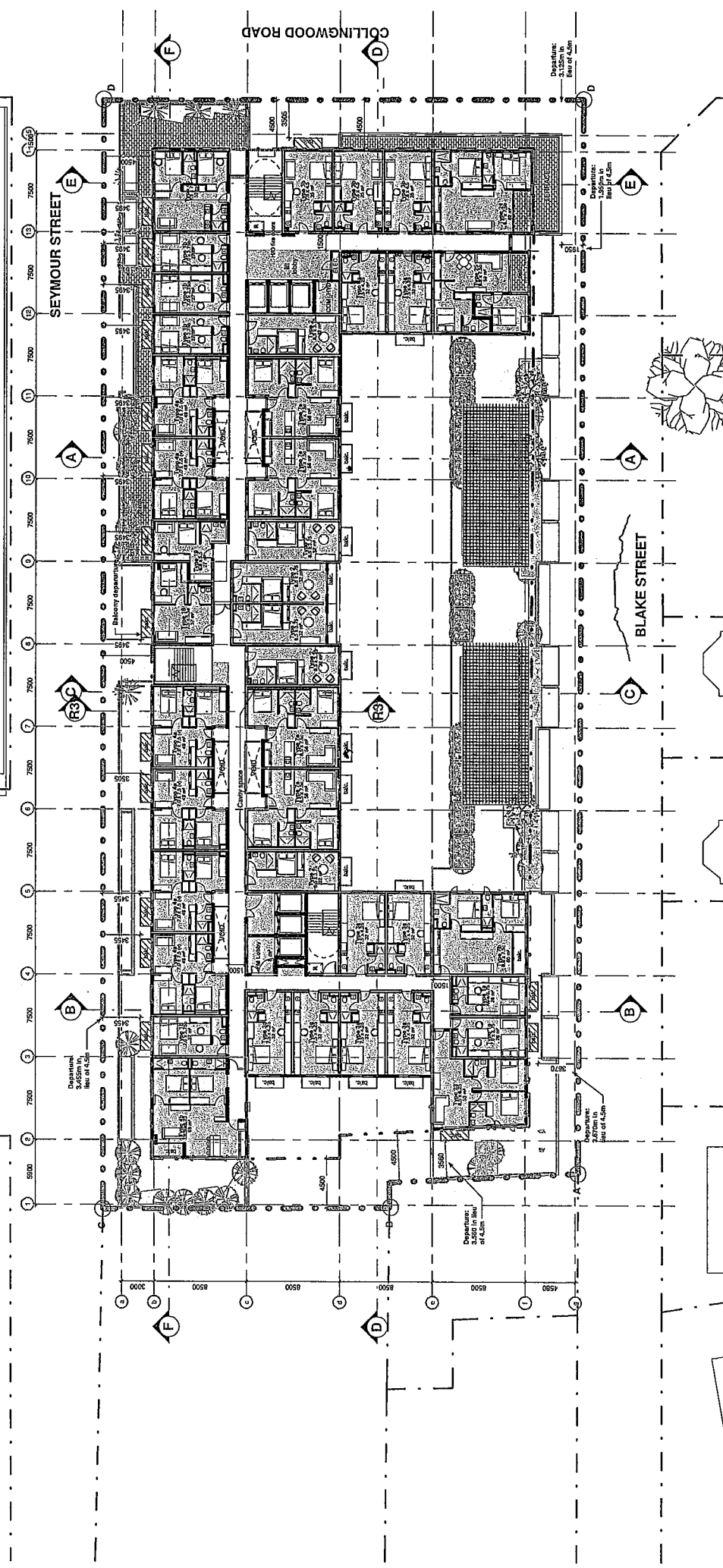
04 - Level 4

project number: 20020
 drawing number: 01-01-008
 scale: 1 : 250 @ A2



Area Legend

- Exclusions
- Floor Space
- Departures



UNIT SCHEDULE_Level 5

Type	Dim.	Area	Count
Type 1a	7.0 x 3.75	26 m ²	2
Type 1b	8.5 x 3.75	32 m ²	6
Type 2	8.5 x 3.75	32 m ²	6
Type 3a	7.5 x 4.25	32 m ²	8
Type 3b	7.5 x 4.5	35 m ²	9
Type 3c	7.5 x 4.5	35 m ²	9
Type 4a	7.0 x 7.5 (U)	53 m ²	6

UNIT SCHEDULE_Level 5

Type	Dim.	Area	Count
Type 2a	8.5 x 6.25	53 m ²	1
Type 2b	8.5 x 6.25	53 m ²	1
Type 2c	8.5 x 7.5	64 m ²	1
Type 2d	8.5 x 7.5	64 m ²	1
Type 2e	8.5 x 7.5	64 m ²	1
Type 2f	8.5 x 7.5	64 m ²	1
Type 2g	8.5 x 7.5	64 m ²	1
Type 2h	8.5 x 7.5	64 m ²	1
Type 2i	8.5 x 7.5	64 m ²	1
Type 2j	8.5 x 7.5	64 m ²	1
Type 2k	8.5 x 7.5	64 m ²	1
Type 2l	8.5 x 7.5	64 m ²	1
Type 2m	8.5 x 7.5	64 m ²	1
Type 2n	8.5 x 7.5	64 m ²	1
Type 2o	8.5 x 7.5	64 m ²	1
Type 2p	8.5 x 7.5	64 m ²	1
Type 2q	8.5 x 7.5	64 m ²	1
Type 2r	8.5 x 7.5	64 m ²	1
Type 2s	8.5 x 7.5	64 m ²	1
Type 2t	8.5 x 7.5	64 m ²	1
Type 2u	8.5 x 7.5	64 m ²	1
Type 2v	8.5 x 7.5	64 m ²	1
Type 2w	8.5 x 7.5	64 m ²	1
Type 2x	8.5 x 7.5	64 m ²	1
Type 2y	8.5 x 7.5	64 m ²	1
Type 2z	8.5 x 7.5	64 m ²	1

UNIT SCHEDULE_Level 5

Type	Dim.	Area	Count
Type 2a	8.5 x 6.25	53 m ²	1
Type 2b	8.5 x 6.25	53 m ²	1
Type 2c	8.5 x 7.5	64 m ²	1
Type 2d	8.5 x 7.5	64 m ²	1
Type 2e	8.5 x 7.5	64 m ²	1
Type 2f	8.5 x 7.5	64 m ²	1
Type 2g	8.5 x 7.5	64 m ²	1
Type 2h	8.5 x 7.5	64 m ²	1
Type 2i	8.5 x 7.5	64 m ²	1
Type 2j	8.5 x 7.5	64 m ²	1
Type 2k	8.5 x 7.5	64 m ²	1
Type 2l	8.5 x 7.5	64 m ²	1
Type 2m	8.5 x 7.5	64 m ²	1
Type 2n	8.5 x 7.5	64 m ²	1
Type 2o	8.5 x 7.5	64 m ²	1
Type 2p	8.5 x 7.5	64 m ²	1
Type 2q	8.5 x 7.5	64 m ²	1
Type 2r	8.5 x 7.5	64 m ²	1
Type 2s	8.5 x 7.5	64 m ²	1
Type 2t	8.5 x 7.5	64 m ²	1
Type 2u	8.5 x 7.5	64 m ²	1
Type 2v	8.5 x 7.5	64 m ²	1
Type 2w	8.5 x 7.5	64 m ²	1
Type 2x	8.5 x 7.5	64 m ²	1
Type 2y	8.5 x 7.5	64 m ²	1
Type 2z	8.5 x 7.5	64 m ²	1

dhk architects (Pty) Ltd
 5th floor, 46 Westmead Centre
 8 Somerset Road, Crows Nest
 NSW 1585
 Tel: +27 (0) 21 421 1800
 Fax: +27 (0) 21 421 1070
 email: architects@dhk.co.za
 reg no: 19862020707

CLIENT CASTLE GROUP
PROJECT 22 COLLINGWOOD OBSERVATORY
DATE 2002/01/09
SCALE 1:250 @ A2
DESIGNER dhk architects
DATE 2002/01/09
SCALE 1:250 @ A2

Notes:

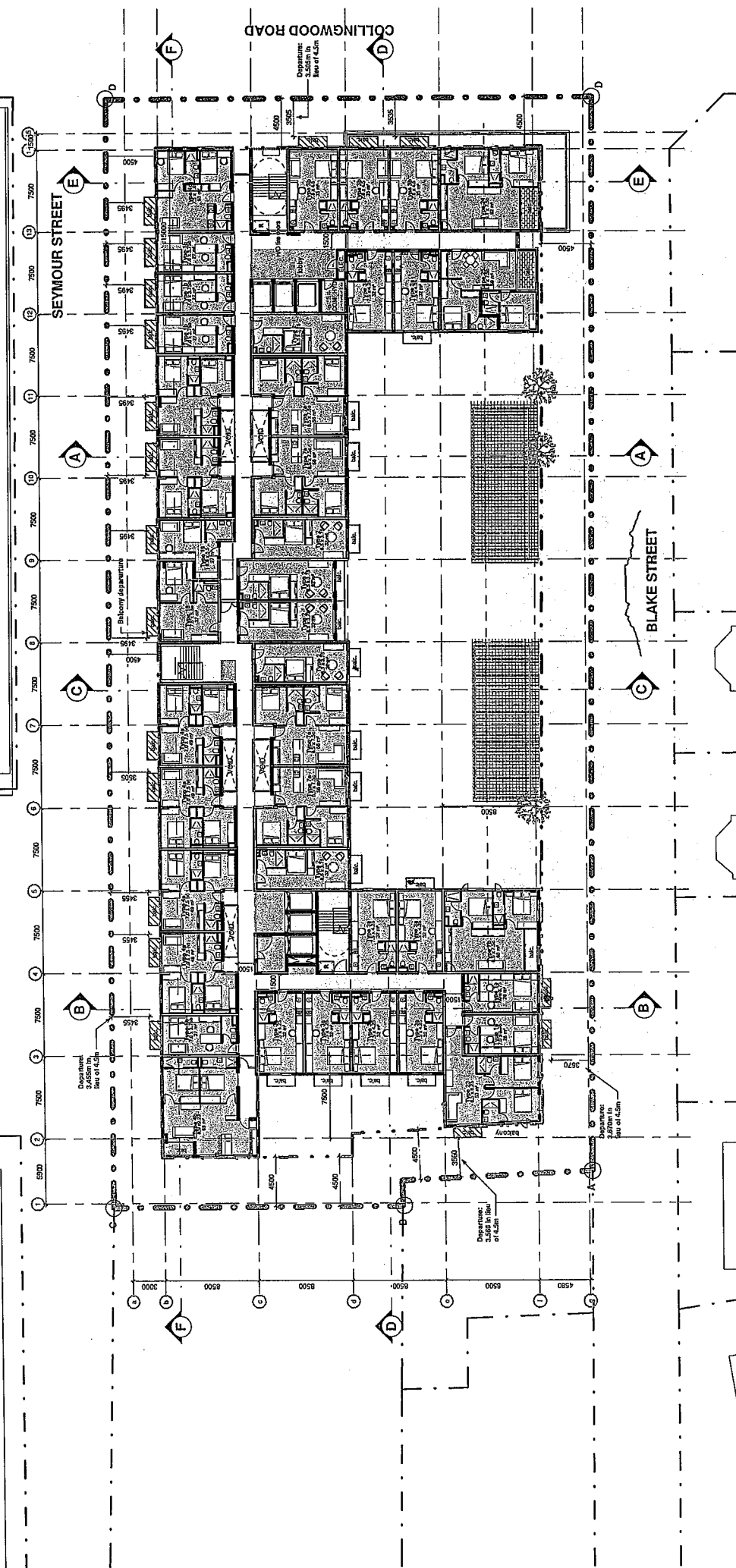
- 1. the design on this drawing is copyright and remains the property of dhk
- 2. all work is to be carried out in accordance with the N.B.S. SANS 10400
- 3. the design on this drawing is for construction purposes only and is not permitted for any other use
- 4. any discrepancies are to be reported to dhk immediately
- 5. dhk architects is not responsible for errors resulting from misinterpretation of this drawing

Revision:

No.	Date	Description	By	Check
1	2002/01/09	Pre-contract	AK	AK
2	2002/01/09	Pre-contract	AK	AK
3	2002/01/09	Design Update	AK	AK
4	2002/01/09	Construction	AK	AK
5	2002/01/09	Construction	AK	AK
6	2002/01/09	Construction	AK	AK
7	2002/01/09	Construction	AK	AK
8	2002/01/09	Construction	AK	AK
9	2002/01/09	Construction	AK	AK
10	2002/01/09	Construction	AK	AK
11	2002/01/09	Construction	AK	AK
12	2002/01/09	Construction	AK	AK
13	2002/01/09	Construction	AK	AK
14	2002/01/09	Construction	AK	AK
15	2002/01/09	Construction	AK	AK
16	2002/01/09	Construction	AK	AK
17	2002/01/09	Construction	AK	AK
18	2002/01/09	Construction	AK	AK
19	2002/01/09	Construction	AK	AK
20	2002/01/09	Construction	AK	AK
21	2002/01/09	Construction	AK	AK
22	2002/01/09	Construction	AK	AK
23	2002/01/09	Construction	AK	AK
24	2002/01/09	Construction	AK	AK
25	2002/01/09	Construction	AK	AK
26	2002/01/09	Construction	AK	AK
27	2002/01/09	Construction	AK	AK
28	2002/01/09	Construction	AK	AK
29	2002/01/09	Construction	AK	AK
30	2002/01/09	Construction	AK	AK
31	2002/01/09	Construction	AK	AK
32	2002/01/09	Construction	AK	AK
33	2002/01/09	Construction	AK	AK
34	2002/01/09	Construction	AK	AK
35	2002/01/09	Construction	AK	AK
36	2002/01/09	Construction	AK	AK
37	2002/01/09	Construction	AK	AK
38	2002/01/09	Construction	AK	AK
39	2002/01/09	Construction	AK	AK
40	2002/01/09	Construction	AK	AK
41	2002/01/09	Construction	AK	AK
42	2002/01/09	Construction	AK	AK
43	2002/01/09	Construction	AK	AK
44	2002/01/09	Construction	AK	AK
45	2002/01/09	Construction	AK	AK
46	2002/01/09	Construction	AK	AK
47	2002/01/09	Construction	AK	AK
48	2002/01/09	Construction	AK	AK
49	2002/01/09	Construction	AK	AK
50	2002/01/09	Construction	AK	AK

Area Legend

- Exclusions
- Floor Space
- Departures



UNIT SCHEDULE_Level 6

Type	Dim.	Area	Count
Type 23	8.3 x 6.25	52 m ²	1
Type 24	8.1 x 7.50	61 m ²	1
Type 25	8.3 x 7.50	62 m ²	1
Type 26	8.3 x 7.50	62 m ²	41

UNIT SCHEDULE_Level 6

Type	Dim.	Area	Count
Type 27	8.3 x 6.25	52 m ²	1
Type 28	7.5 x 7.0	53 m ²	1
Type 29	8.3 x 7.50	62 m ²	4
Type 30	8.3 x 7.50	62 m ²	3
Type 31	8.3 x 5.50	46 m ²	1
Type 32	8.3 x 5.50	46 m ²	1

UNIT SCHEDULE_Level 6

Type	Dim.	Area	Count
Type 33	7.0 x 3.75	26 m ²	2
Type 34	7.0 x 3.75	26 m ²	4
Type 35	8.5 x 3.75	32 m ²	6
Type 36	7.0 x 4.4	31 m ²	3
Type 37	7.0 x 3.75 (V)	26 m ²	6

notes

- Units in this schedule is copyright and remains the property of dhk
- All work to be carried out in accordance with the N.B.R. SANS 1040 and applicable authority regulations.
- All dimensions and levels are to be confirmed on site prior to construction.
- Unit layouts are to be responded to dhk immediately.
- dhk accepts no responsibility for errors resulting from misinterpretation of this drawing.

dhk architects (Pty) Ltd
 9 Somerset road, cape town
 tel: +27 (0) 21 421 8803
 fax: +27 (0) 21 421 8670
 email: architects@dhk.co.za
 reg no: 1998/0280707



22 COLLINGWOOD OBSERVATORY

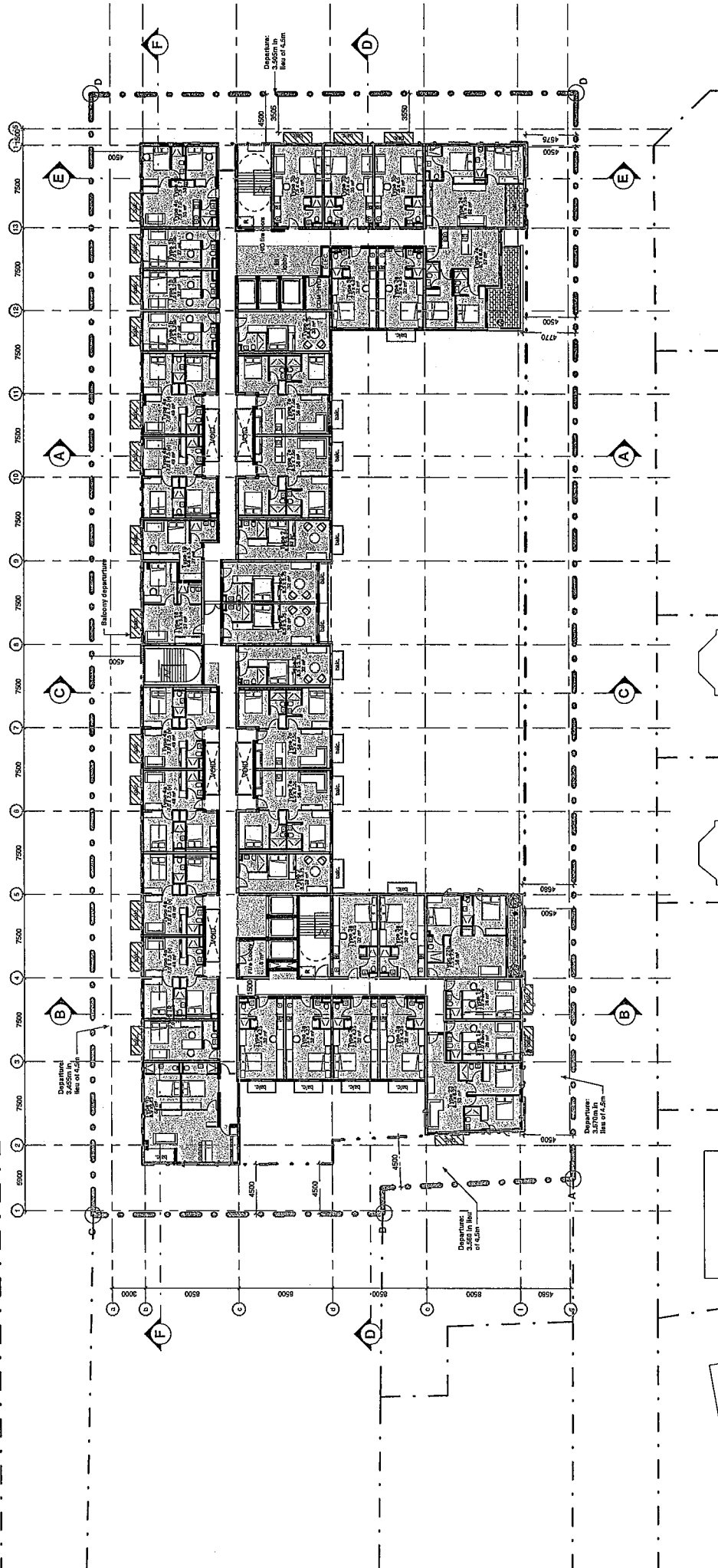
CASTLE GROUP

06 - Level 6

project number 20020
 rev 01-01-010 | P
 drawing number 200220
 scale 1 : 250 @ A2

Area Legend

- Exclusions
- Floor Space
- Departures



UNIT SCHEDULE_Level 7

Type	Dim.	Area	Count
Type 25a	7.5 x 7.4	58 m ²	1
Type 25b	6.5 x 6.5	42 m ²	1
Type 24	11.1 x 12.8	142 m ²	41

UNIT SCHEDULE_Level 7

Type	Dim.	Area	Count
Type 4b	13.3 x 6.23	83 m ²	1
Type 4c	7.5 x 7.0	53 m ²	1
Type 7a	11.5 x 7.5	86 m ²	4
Type 18	7.5 x 5.5	41 m ²	3
Type 19	6.3 x 5.5	35 m ²	1

UNIT SCHEDULE_Level 7

Type	Dim.	Area	Count
Type 1a	7.0 x 5.75	40 m ²	2
Type 1b	7.0 x 5.75	27 m ²	4
Type 1c	7.0 x 5.75	32 m ²	8
Type 1d	7.0 x 5.75	32 m ²	8
Type 1e	7.0 x 5.75	32 m ²	8
Type 1f	7.0 x 5.75	32 m ²	8
Type 1g	7.0 x 5.75	32 m ²	8
Type 1h	7.0 x 5.75	32 m ²	8
Type 1i	7.0 x 5.75	32 m ²	8
Type 1j	7.0 x 5.75	32 m ²	8
Type 1k	7.0 x 5.75	32 m ²	8
Type 1l	7.0 x 5.75	32 m ²	8
Type 1m	7.0 x 5.75	32 m ²	8
Type 1n	7.0 x 5.75	32 m ²	8
Type 1o	7.0 x 5.75	32 m ²	8
Type 1p	7.0 x 5.75	32 m ²	8
Type 1q	7.0 x 5.75	32 m ²	8
Type 1r	7.0 x 5.75	32 m ²	8
Type 1s	7.0 x 5.75	32 m ²	8
Type 1t	7.0 x 5.75	32 m ²	8
Type 1u	7.0 x 5.75	32 m ²	8
Type 1v	7.0 x 5.75	32 m ²	8
Type 1w	7.0 x 5.75	32 m ²	8
Type 1x	7.0 x 5.75	32 m ²	8
Type 1y	7.0 x 5.75	32 m ²	8
Type 1z	7.0 x 5.75	32 m ²	8

client: CASTLE GROUP
 project: 22 COLLINGWOOD OBSERVATORY
 drawing: 07 - Level 7
 sheet: 20020
 revision: 200220
 date: 01-01-01
 scale: 1 : 250 @ A2
 project location: P

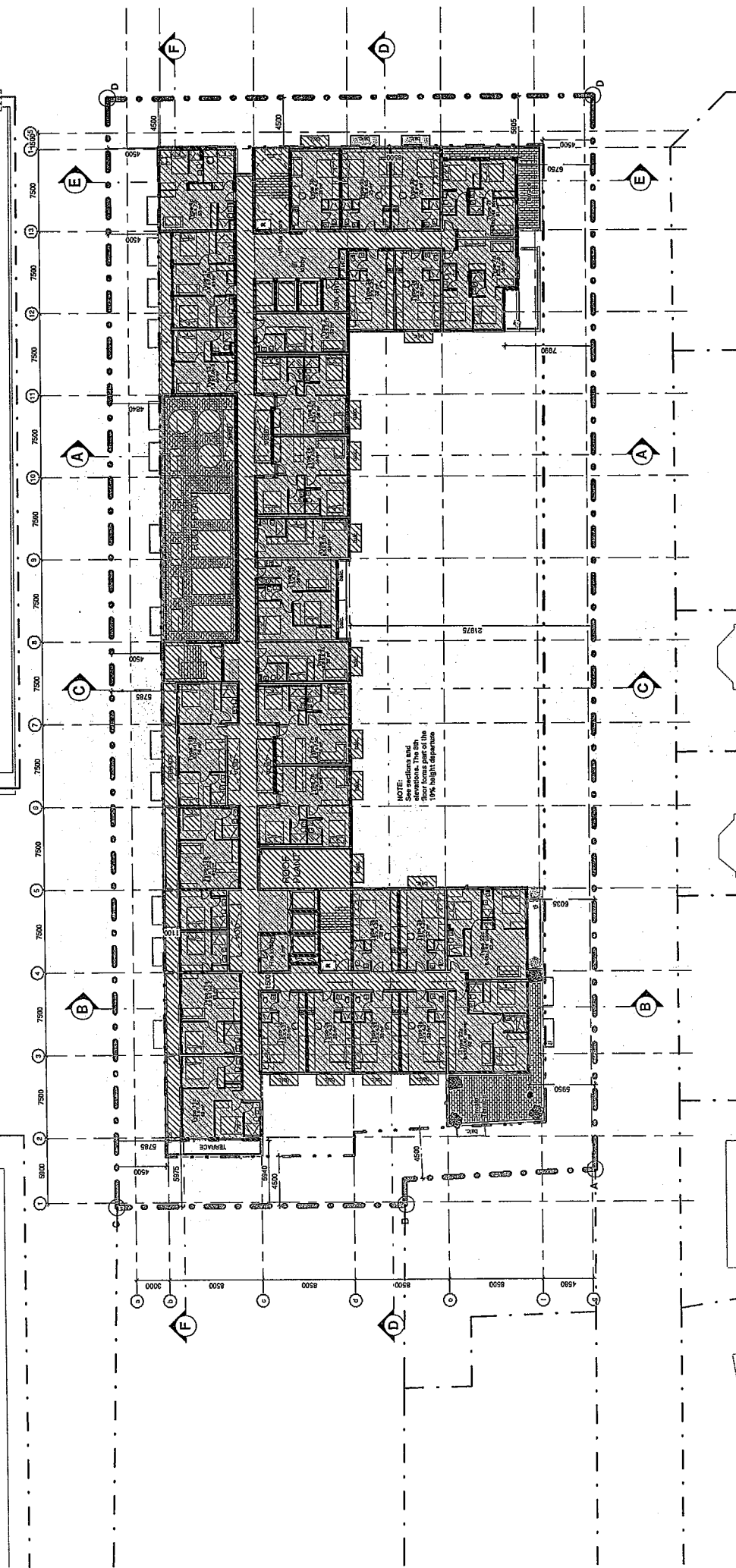
This design on this drawing is copyright and remains the property of dlhk. All works to be carried out in accordance with the N.B.S. SANS 10400.
 The scaling of this drawing for construction purposes is not permitted.
 All dimensions and levels are to be confirmed on site prior to construction.
 Any discrepancies are to be reported to dlhk immediately.
 dlhk accepts no responsibility for errors resulting from misinterpretation of this drawing.

dlhk architects (Pty) Ltd
 6th floor, 4th western centre
 9 Somerset road, sandtown
 tel: +27 (0) 21 421 1665
 fax: +27 (0) 21 421 1670
 email: architects@dlhk.co.za
 reg no: 1998/0280797



Area Legend

- Exclosures
- Floor Space
- Departures



UNIT SCHEDULE_Level 8

Type	Dim.	Area	Count
Type 116	7.5 x 7.26	69 m ²	1
Type 12	7.5 x 7.01.2	61 m ²	1
Type 13	7.5 x 7.01.3	62 m ²	1
Type 228	8.38 x 7.41	62 m ²	1
Type 228	8.38 x 7.41	62 m ²	1
			30

UNIT SCHEDULE_Level 8

Type	Dim.	Area	Count
Type 40	7.5 x 7.40	56 m ²	1
Type 7d	6.5 x 7.0	46 m ²	1
Type 7e	6.5 x 7.5	49 m ²	1
Type 7f	6.5 x 7.5	49 m ²	1
Type 7g	6.5 x 7.5	49 m ²	1
Type 7h	6.5 x 7.5	49 m ²	1
Type 11a	6.0 x 11.2	67 m ²	2
Type 11b	6.0 x 11.2	67 m ²	2

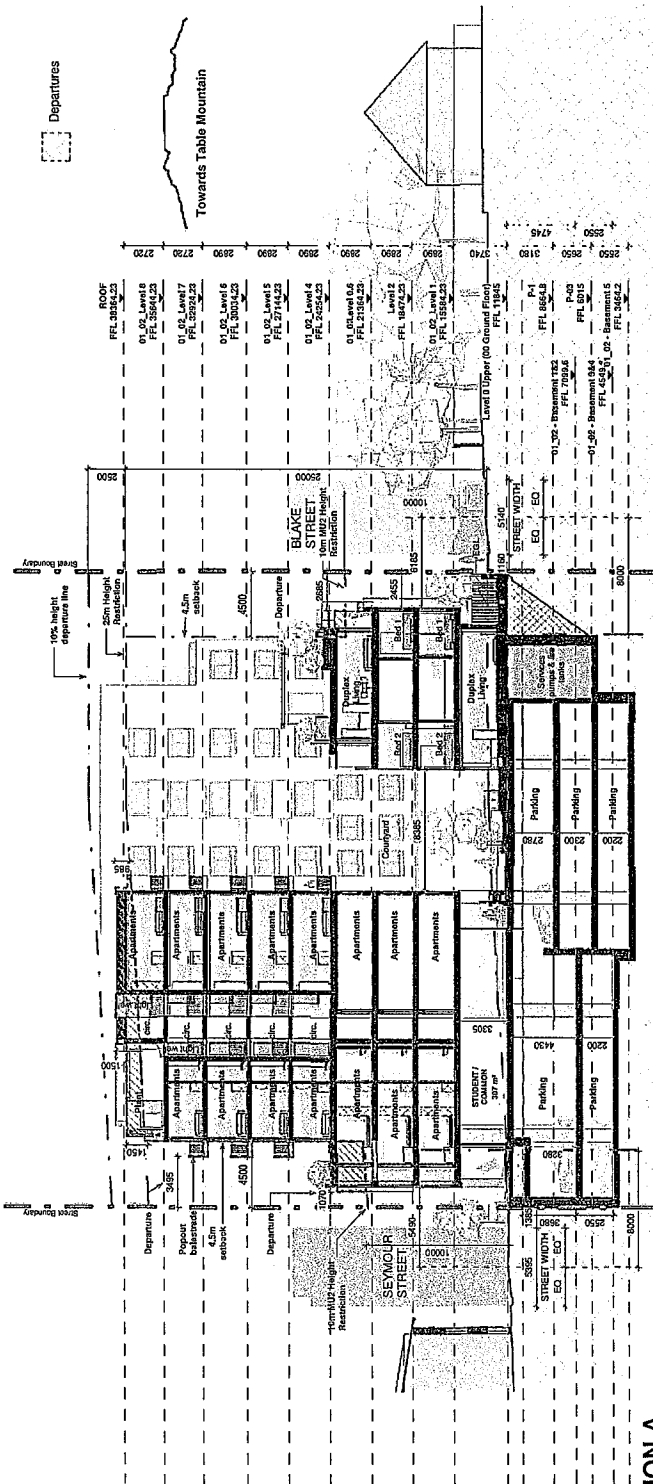
UNIT SCHEDULE_Level 8

Type	Dim.	Area	Count
Type 3	6.5 x 3.75	24 m ²	3
Type 3a	7.5 x 4.25	32 m ²	3
Type 3b	7.5 x 4.25	32 m ²	3
Type 3c	7.5 x 4.25	32 m ²	3
Type 4c	7.5 x 7.0	53 m ²	1

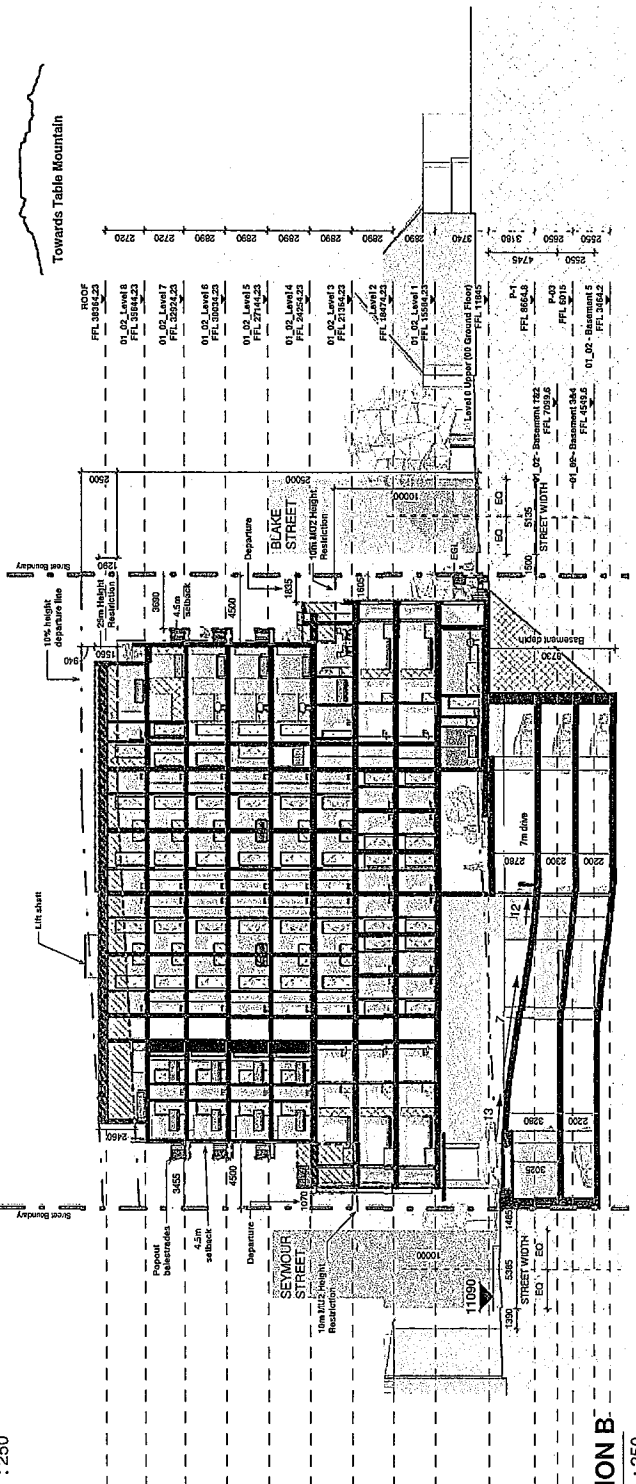
notes:
 • the design on this drawing is copyright and remains the property of dhk architects (Pty) Ltd.
 • all dimensions are in millimeters unless otherwise stated.
 • the building of this drawing for construction purposes is not permitted.
 • any use of this drawing for construction purposes is not permitted.
 • any use of this drawing for construction purposes is not permitted.
 • any use of this drawing for construction purposes is not permitted.
 • any use of this drawing for construction purposes is not permitted.

dhk architects (Pty) Ltd
 6th floor, de waalwater centre
 9 sammars road, cape town
 tel: +27 (0) 21 421 6003
 fax: +27 (0) 21 421 6070
 email: architects@dhk.co.za
 reg no: 1994/0260707





SECTION A
SCALE 1 : 250

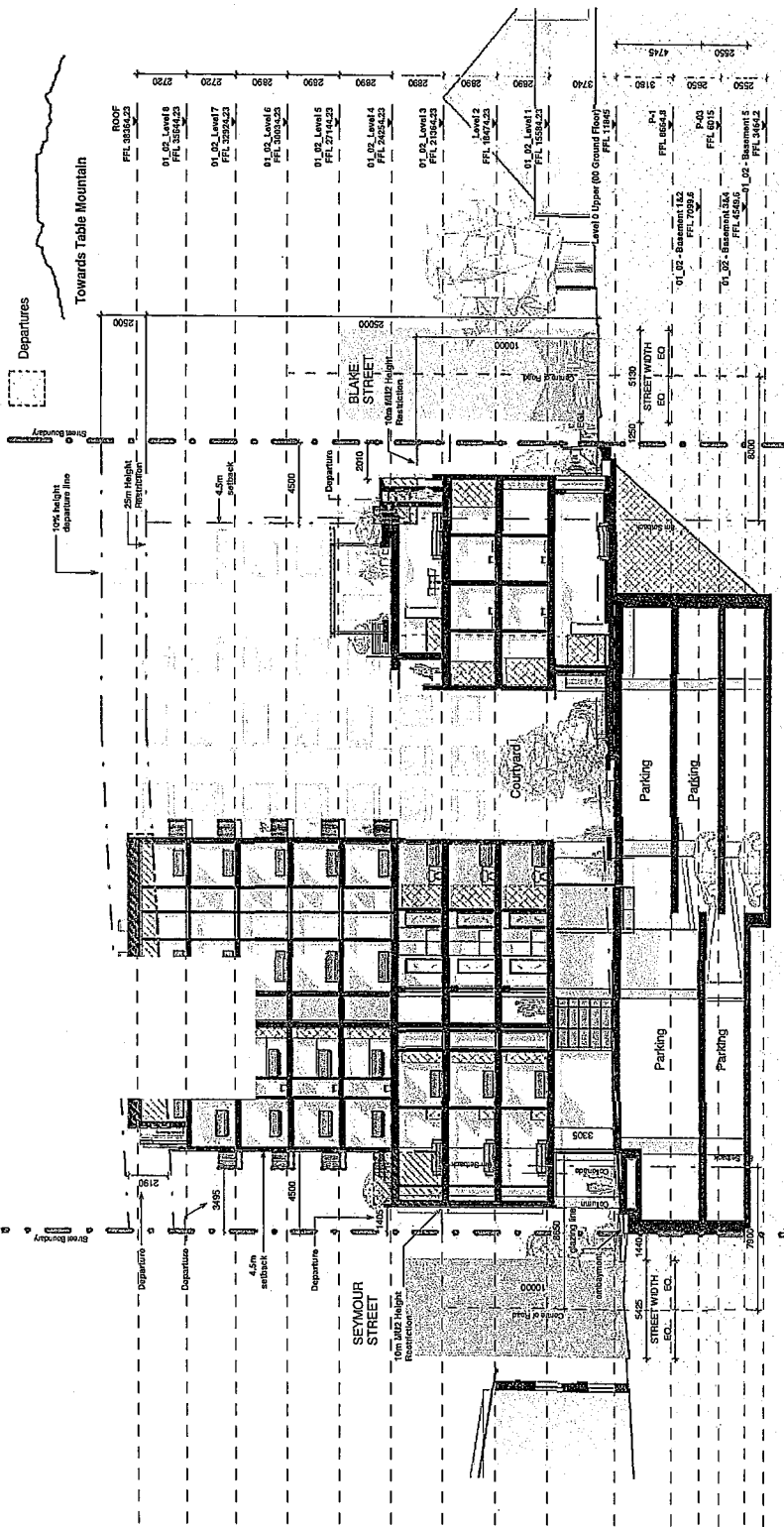


SECTION B
SCALE 1 : 250

Notes:
 • the design on this drawing is copyright and remains the property of dhk
 • all work is to be carried out in accordance with the N.S.R. SANS 10400
 • the scaling of this drawing for construction purposes is not permitted
 • all dimensions and levels are to be confirmed on site prior to
 • any discrepancies are to be reported to dhk immediately
 • dhk accepts no responsibility for errors resulting from misinterpretation of
 this drawing

dhk architects (Pty) Ltd
 8th floor, de waartman centre
 9 somerset road, cape town
 tel: +27 (0) 21 421 8000
 fax: +27 (0) 21 421 8070
 email: architects@dhk.co.za
 reg no: 1998/0280787





SECTION C
SCALE 1:200

dhk

dhk architect (Pty) Ltd
5th floor, 46 Waterfront Centre
9 Sentenar Road, Cape Town
Tel: +27 (0) 21 421 8800
Fax: +27 (0) 21 421 0270
Email: arbabed@dhk.co.za
reg no: 1998/02607/07

notes

- the design on this drawing is copyright and remains the property of dhk
- any reproduction or use of this drawing without the written consent of dhk is prohibited
- the scaling of this drawing for construction purposes is not permitted
- construction and items are to be confirmed on site prior to
- any discrepancies are to be reported to dhk immediately
- responsibility for correct reading, interpretation and incorporation of this drawing

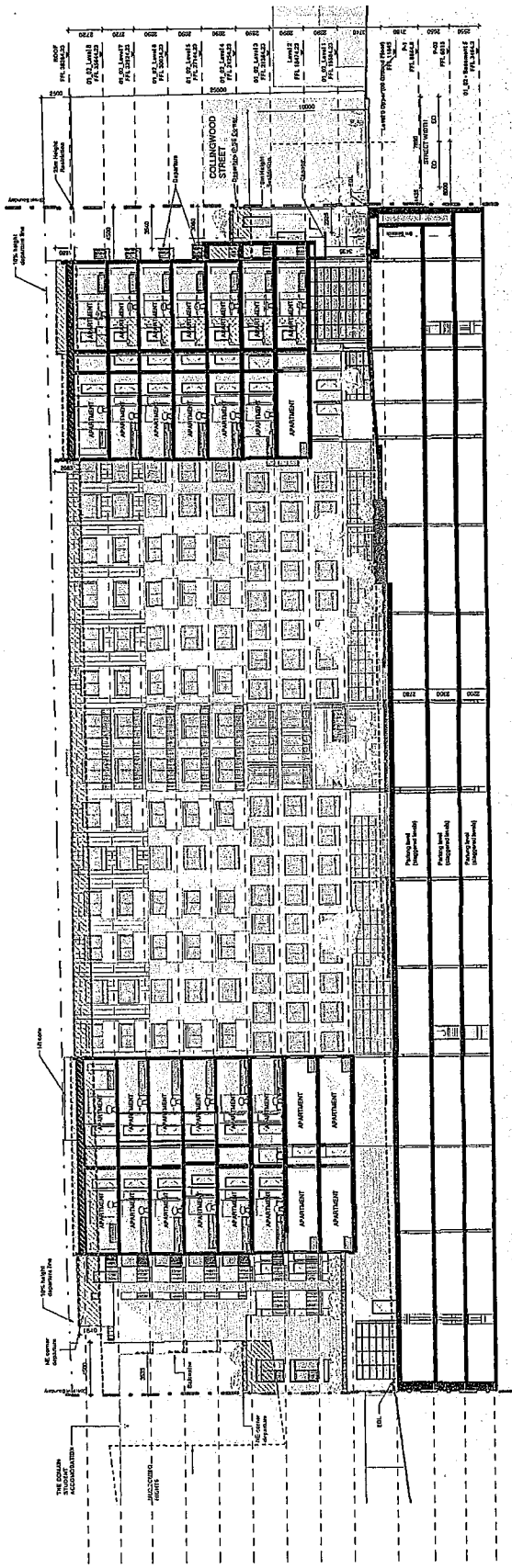
client: **CASTLE GROUP**
project: **22 COLLINGWOOD OBSERVATORY**

drawing: **Sections 2**

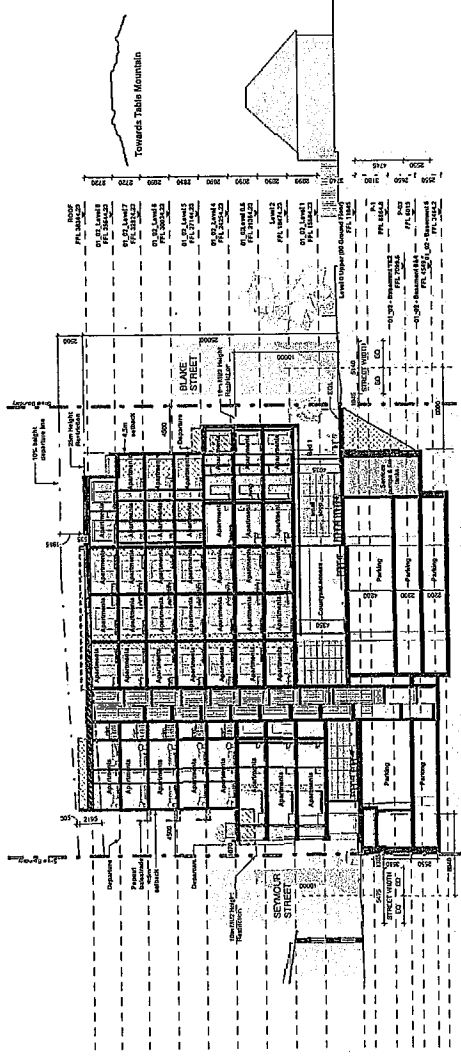
revision number: **02-01-002**
revision: **O**
drawing number: **200220**
sheet: **200220**
scale: **1:200 @ A2**



Departures



SECTION D
SCALE 1:200



SECTION E
SCALE 1:250

NOTES:
 1. All drawings are to be read in conjunction with the contract documents and specifications.
 2. All dimensions are to be taken from the finished face of the work unless otherwise indicated.
 3. All materials and workmanship shall conform to the standards set out in the specifications.
 4. All work shall be completed in accordance with the programme of works and any variations shall be agreed in writing.
 5. All drawings are the property of the architect and shall not be used for any other purpose without the written consent of the architect.

dhk architects (Pty) Ltd
 8th floor, de wetterstrand centre
 9 Somerset road, cape town
 tel: +27 (0) 21 421 1625
 fax: +27 (0) 21 421 1679
 www.dhk.co.za
 reg no: 198920280707

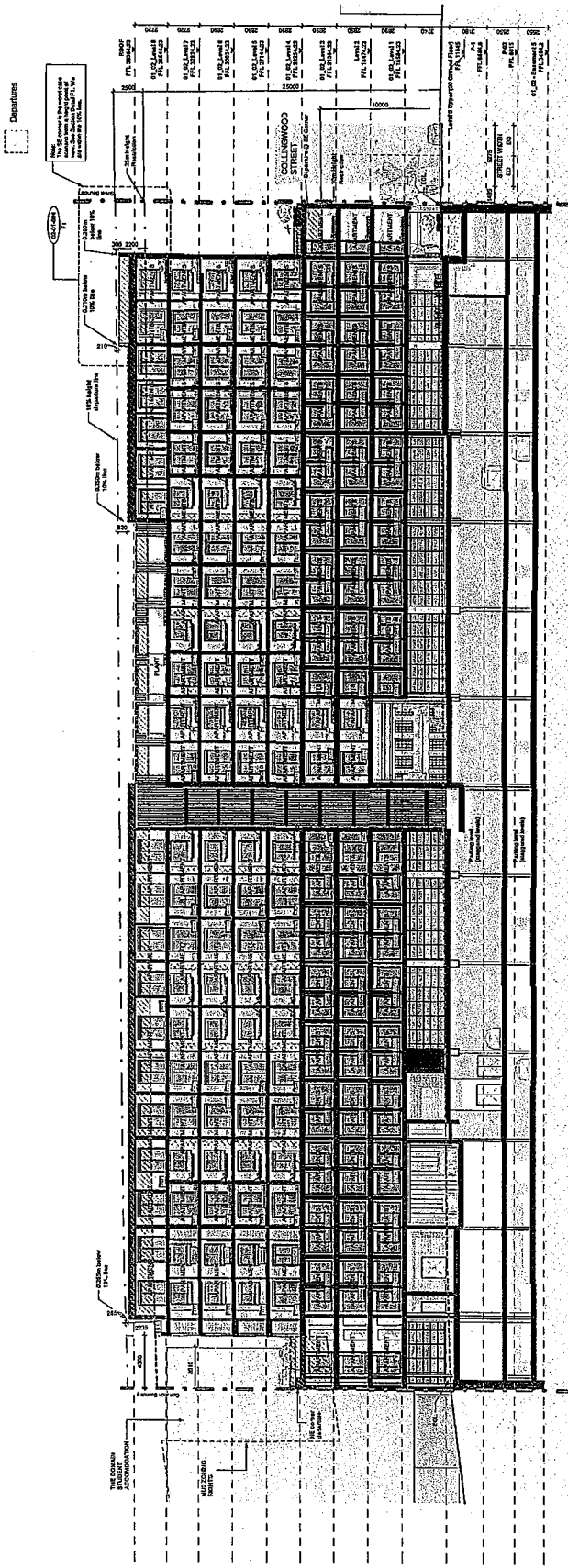
PROJECT
 22 COLLINGWOOD
 OBSERVATORY

CLIENT
 CASTLE GROUP

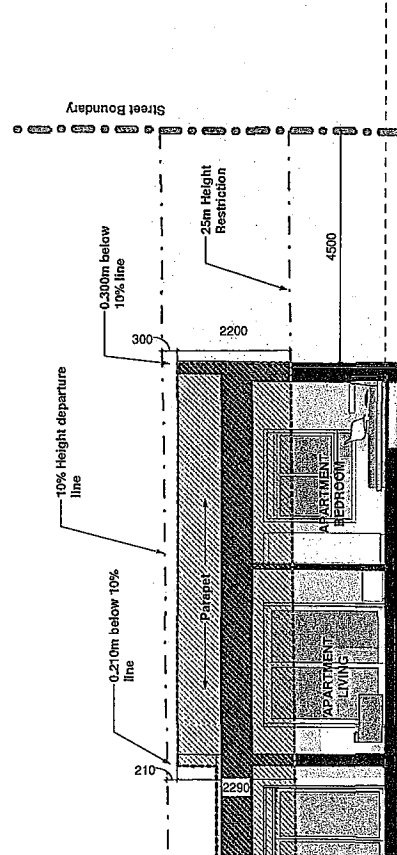
SECTIONS 3

DATE
 20020
 DRAWING NUMBER
 02-01-003 | E
 PROJECT NUMBER
 YNMMDD | As indicated @ A1





02-02 - Section SDP F
SCALE 1 : 200



02-02 - Section SDP F Detail F1
SCALE 1 : 50

PROJECT NO.	02-01-004 B
DATE	10/14/20 As indicated @ A1
REVISION	201209
INFORMATION	

PROJECT NO. 02-01-004 | B
DATE 10/14/20 | As indicated @ A1
REVISION 201209

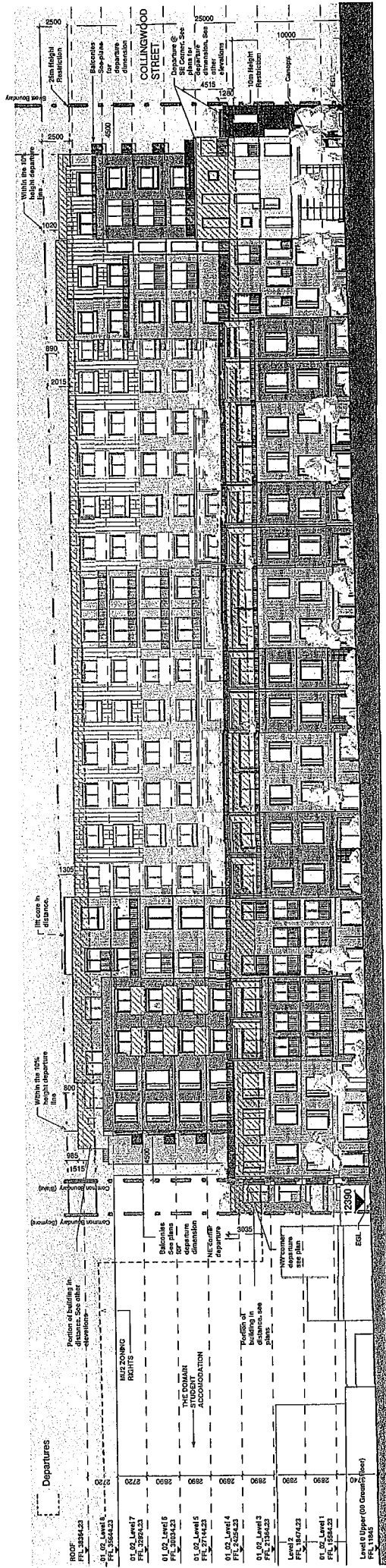
CLIENT CASTLE GROUP
PROJECT 22 COLLINGWOOD OBSERVATORY
SECTIONS 4

DATE 02
SCALE 1:50
DRAWN BY [unintelligible]
CHECKED BY [unintelligible]
PROJECT NO. 02-01-004 | B
DATE 10/14/20

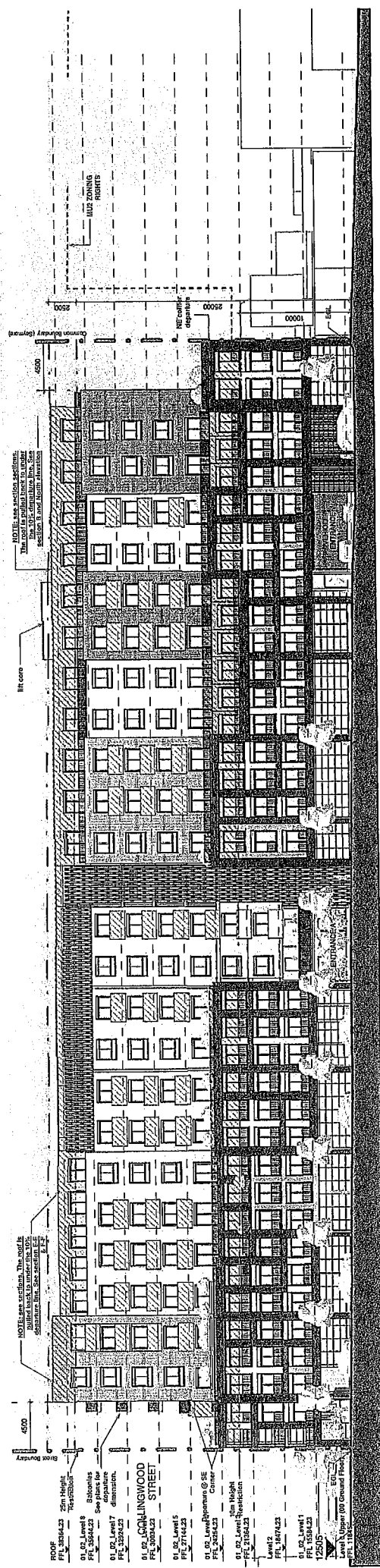
THE DRAWING IS TO BE USED IN CONNECTION WITH THE CONTRACT AND SHALL BE VOID WITHOUT IT.
ALL DIMENSIONS ARE IN METERS UNLESS OTHERWISE SPECIFIED.
ALL DIMENSIONS ARE TO FACE UNLESS OTHERWISE SPECIFIED.
ALL DIMENSIONS ARE TO FACE UNLESS OTHERWISE SPECIFIED.

dhk architects (pty) Ltd
6th floor, de waikanae centre
9 somerset road, auckland
t: +67 (0) 21 421 6603
f: +67 (0) 21 421 6070
www.dhk.co.nz
reg. no. 18280306707






Blake Street Elevation
SCALE 1 : 250



Seymour Street Elevation
SCALE 1 : 250



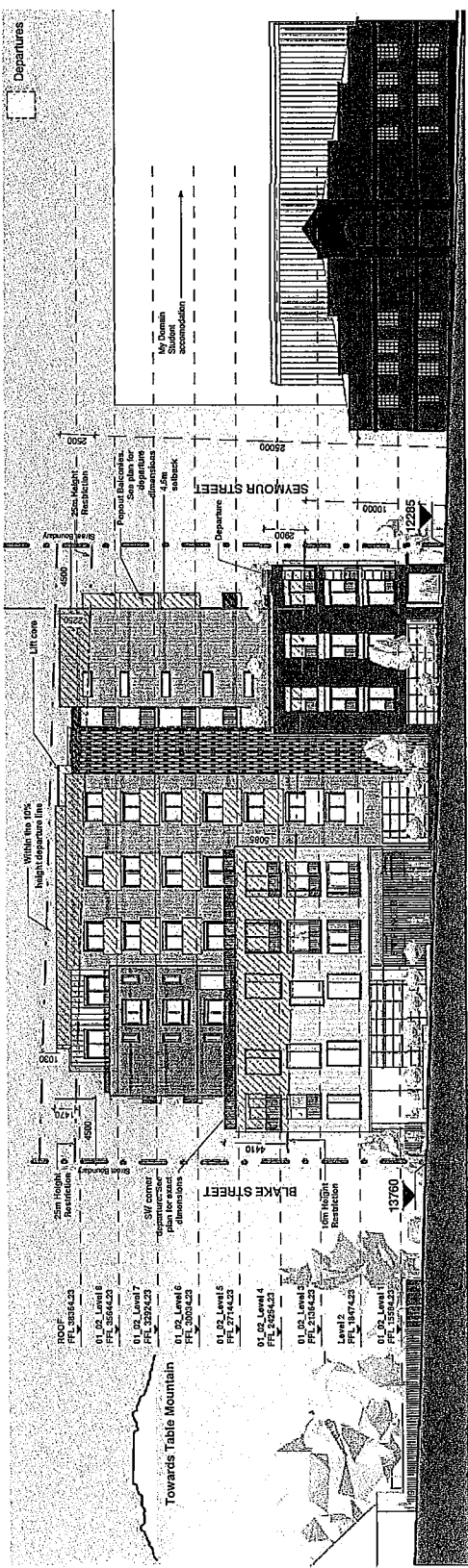
 chik architects (Pty) Ltd
 6th floor, 45 Waterloo Centre
 8 Somerset Road, Cape Town
 Tel: +27 (0) 21 421 9303
 Fax: +27 (0) 21 421 9370
 email: architects@chik.co.za
 reg no: 195602087077

Note:
 • The design on this drawing is copyright and remains the property of CHIK ARCHITECTS (PTY) LTD.
 • All rights reserved. No part of this drawing may be reproduced, stored in a retrieval system, or transmitted in any form or by any means, electronic, mechanical, photocopying, recording, or by any information storage and retrieval system, without the prior written permission of CHIK ARCHITECTS (PTY) LTD.
 • The scaling of this drawing is for reference only. It is not to be used for construction purposes.
 • CHIK ARCHITECTS (PTY) LTD. shall not be held responsible for errors resulting from misinterpretation of this drawing.

revision	no	date	description
1	00000	2020/03/01	Pre-contract 2
2	00007	2020/03/01	Basic floor plan
3	00008	2020/03/01	Pre-SDFP Update
4	00009	2020/03/01	SDFP floor plan
5	00010	2020/03/01	SDFP structural sections and elevations
6	00011	2020/03/01	Chimney, elevation and CP details
7	00012	2020/03/01	Other SDFP updates

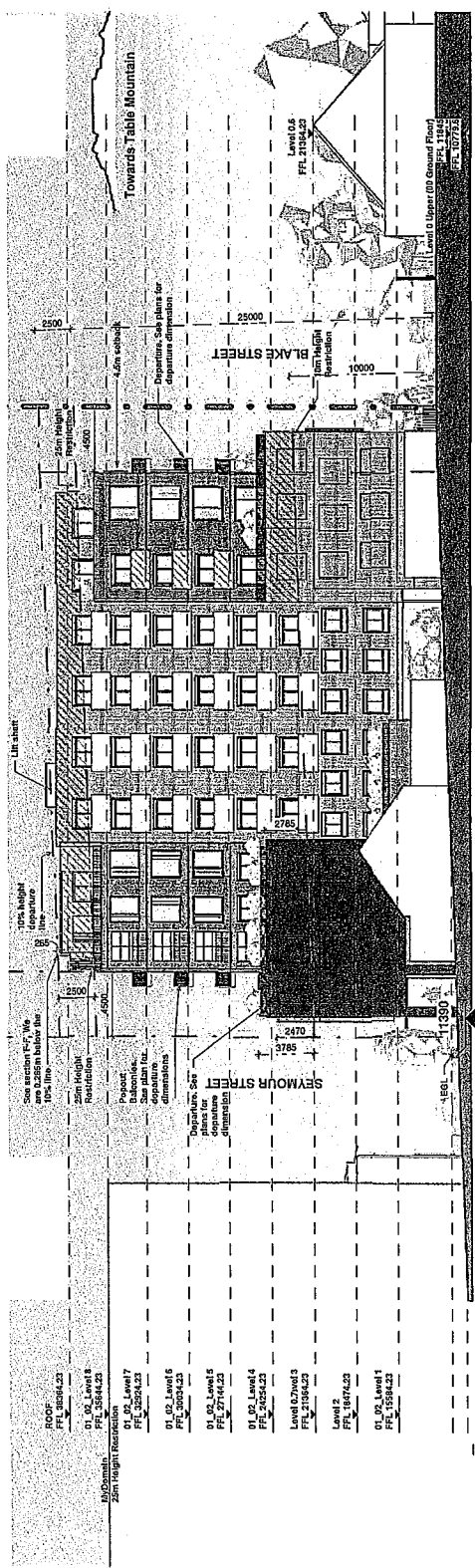
PROJECT: 22 COLLINGWOOD OBSERVATORY
 CLIENT: CASTLE GROUP
 DRAWING NUMBER: 03-01-001 | P
 DATE: 2020
 BY: YMM/DD
 SCALE: 1 : 250 @ A2

Blake & Seymour Streets Elevations



Collingwood Road Elevation

SCALE 1 : 250



North Elevation

SCALE 1 : 250

- The design on this drawing is copyright and remains the property of dhk
- All work to be carried out in accordance with the N.B.A. SANS 10400
- The scaling of this drawing for construction purposes is not permitted
- All dimensions and levels are to be confirmed on site prior to construction
- Any discrepancies are to be reported to dhk immediately
- dhk does not accept responsibility for errors resulting from misinterpretation of this drawing

dhk architects (Pty) Ltd
 6th floor, de waterloos centre
 9 southeast road, cape town
 tel: +27 (0) 21 421 1805
 fax: +27 (0) 21 421 0970
 email: architects@dhk.co.za
 reg no: 195602687007



PROJECT: 22 COLLINGWOOD OBSERVATORY

CLIENT: CASTLE GROUP

Collingwood & North Elevations

DATE: 03-01-002
 DRAWN BY: YVM/DD
 SCALE: 1 : 250 @ A2

PROJECT NUMBER: 20020
 PROJECT NAME: Collingwood Observatory

